

Precision Snap-Disc Thermostats

High quality snap-disc thermostats are custom made in quantities of 50 pieces and up, primarily for original equipment manufacturers. Typically, snap-discs are used as high limits. Contact factory for design assistance.

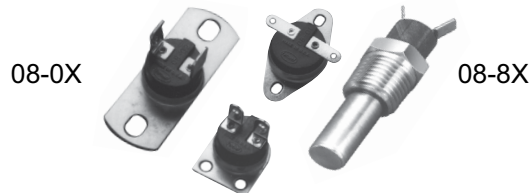


TABLE 1 Snap-Disc Thermostats

| Dimensions in (mm) | | Rating | Set-Point - °C (°F) | Catalog Number |
|--------------------------------------|-------------------------------------------------------------|---------------|-----------------------------------|-------------------|
| Dia. | Height | | | |
| 08-0X Surface Mount Snap Disc | | | | |
| 0.640" (16.3 mm) | 0.250" (6.4 mm) | 7A 240 VAC | -12°C to 177°C (10°F to 350°F) | 08-01 |
| 0.640" (16.3 mm) | 0.350" (8.9 mm) | 12A 240V | | 08-02 |
| 0.667" (16.9 mm) | 0.350" (8.9 mm) | 5A 240V | -12°C to 288°C (10°F to 550°F) | 08-03 |
| 08-8X Probe Style Snap Disc | | | | |
| 0.545" (13.8 mm) | 9/16" (14.3 mm) or 1" (25.4 mm) Probe Length Standard | 3A 240V | -12°C to 288°C (10°F - 550°F) | 08-80 |
| 0.545" (13.8 mm) | 9/16" (14.3 mm) or 1" (25.4 mm) Probe Length Standard | 5A 240V | -12°C to 177°C (10°F to 350°F) | 08-81 |

Note:
08-8X also available in coupling head styles

Control Panel Thermostat

These Fenwal snap-discs have been designed to control low wattage SS or SD type Caloritech™ strip heaters which are commonly used to heat control panels to prevent buildup of damaging internal moisture in low temperatures.

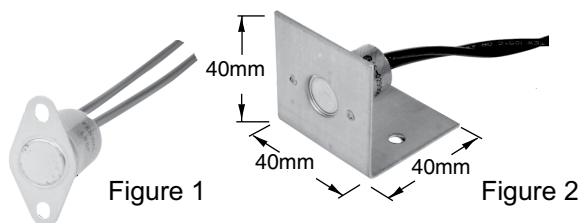


TABLE 2 Panel Thermostat

| Description | Fig. | Contact Rating | Operating Temp. | Catalog No. |
|--------------|------|-------------------|------------------------------|-------------|
| Less Bracket | 1 | 12 AMP | Open 13°C (55°F) | 15897 001 |
| c/w Bracket | 2 | 120/240 VAC | Close 2°C (36°F) (fixed) | 15897 002 |

Snap-Disc Thermostats & Detect-a-Fire® Units

Detect-a-Fire® Units

These highly reliable detection and release devices have been a standard of the industry for over 45 years; controlling the release of fire suppression agents such as CO₂, water, or dry chemicals. In some systems the device is used as an alarm to sense overheat or fire and alert personnel. In other systems, it is used to sense fire and actuate fire attack systems. Detect-a-Fire® units are designed with rate compensation. Only the Detect-a-Fire® unit accurately senses the surrounding air temperature as well as fire growth rate. At precisely the predetermined danger point, the system is activated.



Figure 3



Figure 4



Figure 5



Figure 6

TABLE 3 Fenwal Detect-a-Fire®

| Contact Action on Rise | Fig. No. | Description | Catalog Number |
|---------------------------|----------|--------------------|----------------|
| Open | 4 | Horizontal Flush | 12 027020 000 |
| Open | 3 | Horizontal Surface | 12 027020 001 |
| Close | 4 | Horizontal Flush | 12 027021 000 |
| Close | 3 | Horizontal Surface | 12 027021 001 |
| Open | 5 | Vertical Hex | 12 027120 000 |
| Close | 5 | Vertical Hex | 12 027121 000 |
| Open | 6 | Vertical Coupling | 12 028020 003 |
| Close | 6 | Vertical Coupling | 12 028021 000 |

Note:
5.0 Amps, 125 VAC
0.5 Amps, 125 VDC

Horizontal detectors (Figures 3 & 4) are designed for locations where appearance is a factor. Horizontal detectors are suitable for non-hazardous locations. Flush mounted units (Figure 3) are designed to mount onto standard 4" (102 mm) octagonal electrical boxes. Vertical detectors (Figures 5 & 6) can be operated in hazardous locations provided they are terminated in an approved fitting. Models are available for all hazardous locations.

To Order Specify

Quantity, catalog number and temperature setting.