

## High Temperature Wire

For specific information on allowable current capacity and temperatures for wire refer to your regional Electrical Code. Wire ampacity decreases as the ambient temperature increases.

## Other Gauges

Heavier gauges are available. Consult factory.

### High Temperature Wire 600V Max. - 3 Wires Max. In Raceway

Gauge	Maximum Allowable Wire Temp.		Recommended Max. Amps at Ambient of		Catalog Number
	°C	°F	30°C (86°F)	140°C (284°F)	
8	200	392	55	32	SEW-8
10	200	392	45	26	SEW-10
12	200	392	30	17	SEW-12
10	250	482	40	23	TCGT-10
12	250	482	25	14	TCGT-12

## To Order Specify

Quantity and catalog number.

## Flow Switches

Flow Switches are typically used as proving switches to energize heaters only when sufficient flow is present. They are inserted into pipelines carrying non-corrosive and non-hazardous liquids. Flow rates from 3 to 700 G.P.M. can be accommodated in 1" to 8" (25 mm to 203 mm) pipe sizes.



### Flow Switches

Process Connection	Switch Rating		Exposure	Catalog Number
	Resistive	Inductive		
1" NPT	16A 277VAC Max	125VA 24-277VAC	150PSIG (1034kPa)	F61KB-11

## To Order Specify

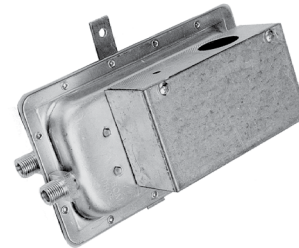
Quantity and catalog number.

## Air Flow Switches.

### Pressure Differential Switch

This device is used as an interlock to ensure sufficient air movement before a duct heater can be energized.

The pressure differential switch must be installed to a vertical surface.



### Pressure Differential Switches

Pressure Range	Electrical Rating	Catalog Number
.05" to 12.0" WC (Field Adjustable)	15 amp Resistive 120 / 277VAC 300VA Inductive	AFS-222

### Sail Switch

Sail switches are used to activate electrical equipment in response to airflow in a duct. Both normally open and normally closed contacts (SPDT) are provided with a 2.5 AMP 240VAC maximum resistive rating. The normally open contact makes at 250 fpm (1.3 m/s) and breaks below 75 fpm (0.4 m/s). The sail switch can be adapted to horizontal or vertical air flow.



### Sail Switch

Electrical Rating	Air Flow		Maximum Air Temp.		Catalog Number
	Min.	Max.	°C	°F	
2.5A 240VAC	75 fpm	250 fpm	77	170	S688A1007

## To Order Specify

Quantity and catalog number.

## High Temperature Wires, Flow & Air Flow Switches