



HEATING SYSTEMS

HELPING THE WORLD DECARBONIZE
ONE WATT AT A TIME



ENGINEERED SOLUTIONS FOR BOILER ELECTRIFICATION



Visit www.thermon.com to contact a Thermon representative near you.

HEAD OFFICE: 7171 SOUTHWEST PKWY | BUILDING 300 SUITE 200 | AUSTIN, TX | 78735 | UNITED STATES

CALORITECH: 2721 PLYMOUTH DRIVE | OAKVILLE, ON | L6H 5R5 | CANADA



CALORITECH

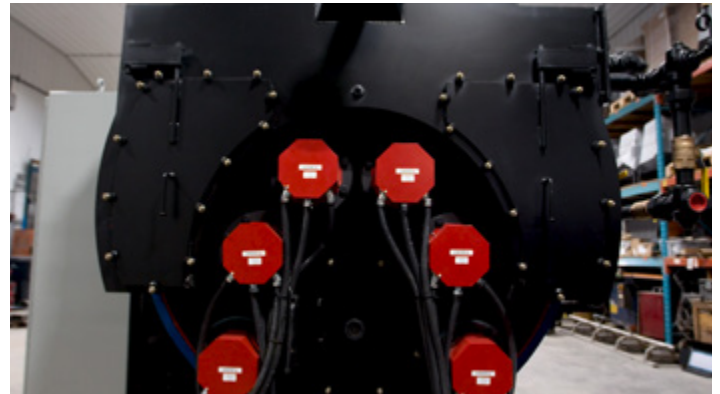
ELECTRIC IMMERSION HEATERS
FOR MULTI-FUEL BOILERS

Reducing our carbon footprint is a global responsibility for which Thermon is doing its part in helping the world decarbonize. Local government and utility providers are providing incentives to electrify traditional gas fired boilers. To this extent, Thermon has proven success on supplying electric heaters to gas boiler manufacturers who have integrated

electric heating into a multi-fuel boiler setup. Our electric flange and screw plug heaters can be configured to a variety of configurations, and can be offered with a SCR control panel. One example of one our success story utilizes our electric flange heaters in a multi-fuel setup with gas and oil heating options.



Hurst Boiler
(Gas, Oil and Electric)



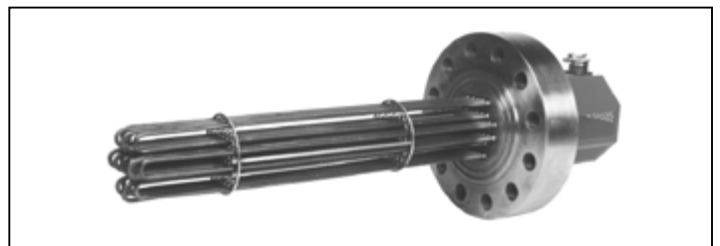
Caloritech™ CX Flange Heaters used with Boiler

CX FLANGE HEATERS

Caloritech™ CX Replacement Boiler Flange Heaters are registered Caloritech™ quality replacements for boilers of the highest commercial grade available anywhere. Replacement boiler flange heaters are available in a range of sizes and styles to suit the requirements of different boiler units, including rectangular flanges, square flanges, and round flanges.

FEATURES:

- › Boiler elements available for both Thermon Caloritech™ boilers and boilers of other manufacturers
- › Standard and custom units to customer requirements available
- › Designs for steam boilers and water boilers



Visit www.thermon.com to contact a Thermon representative near you.

HEAD OFFICE: 7171 SOUTHWEST PKWY | BUILDING 300 SUITE 200 | AUSTIN, TX | 78735 | UNITED STATES

CALORITECH: 2721 PLYMOUTH DRIVE | OAKVILLE, ON | L6H 5R5 | CANADA



CALORITECH

ELECTRIC IMMERSION HEATERS
FOR MULTI-FUEL BOILERS

CX FLANGE IMMERSION HEATERS

Caloritech™ CX Flange heaters are configurable for multi-fuel boiler applications.

FLANGE HEATERS ARE AVAILABLE IN TWO DIFFERENT SERIES:

CXC SERIES

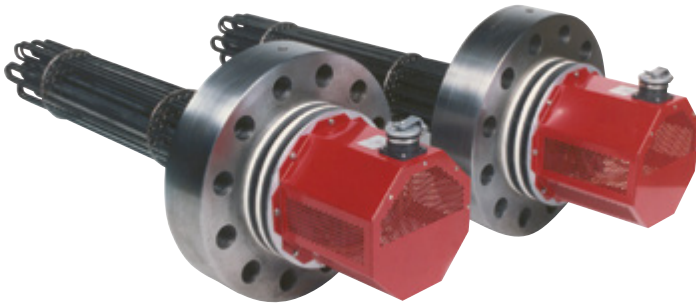
Caloritech™ CXC Flange Heaters are used primarily for water heating applications and feature copper sheathed elements silver brazed to a steel flange.

CXI SERIES

Caloritech™ CXI Flange Heaters are well suited for heating water, especially in hot water and steam boilers, as well as heating mildly corrosive solutions in rinse tanks, spray washers, etc. The heater features incoloy® sheathed elements silver brazed to steel flange.

FEATURES:

- › Available in a standard range of sizes from 2.5" to 14" (ANSI flange dimensions) and up to 135" immersed length, custom lengths and diameters up to 50" are also available.
- › Available in a variety of voltages from 208 to 690V
- › Custom flange sizes available
- › Built-in thermostats, thermocouples, thermostat wells and high limits available
- › General purpose, NEMA 4, NEMA 4X & Explosion proof terminal boxes available
- › CSA, C/US; ATEX, EAC & IEC Ex available



SCREW PLUG HEATERS WITH 1" TO 2.5" NPT TAPERED PLUGS

The application requires the heating element to be fully immersed in the liquid to ensure safe and reliable operation. Electric heating provides close 100% efficiency and is easy to control.



Visit www.thermon.com to contact a Thermon representative near you.

HEAD OFFICE: 7171 SOUTHWEST PKWY | BUILDING 300 SUITE 200 | AUSTIN, TX | 78735 | UNITED STATES

CALORITECH: 2721 PLYMOUTH DRIVE | OAKVILLE, ON | L6H 5R5 | CANADA



CALORITECH

ELECTRIC IMMERSION HEATERS
FOR MULTI-FUEL BOILERS

CONTROL PANELS

Caloritech™ control panels are designed for automatic control of electric heaters utilizing proven concepts and procedures developed from our experience with thousands of installations.

Our panels feature conservative designs with switching devices, fusing and internal wiring derated from the manufacturer's specified maximum allowable currents.

Type CPA fully packaged control panels are suitable for use in a variety of electric heater installations. The CPA series includes:

- › Type 4 weather resistant enclosures with hinged doors
- › Disconnect switch with door interlock used control circuit transformer with 120V secondary control voltage
- › On-off switch
- › Fused magnetic definite purpose contactor(s)
- › Digital indicating configurable microprocessor based temperature control (Series UT320)
- › Electronic high limit, manual or auto reset
- › Pilot lights for "system on", "heat on", "high limit"



THS2050-0522

Visit www.thermon.com to contact a Thermon representative near you.

HEAD OFFICE: 7171 SOUTHWEST PKWY | BUILDING 300 SUITE 200 | AUSTIN, TX | 78735 | UNITED STATES

CALORITECH: 2721 PLYMOUTH DRIVE | OAKVILLE, ON | L6H 5R5 | CANADA