



CX Flange Heater

Increased Safety

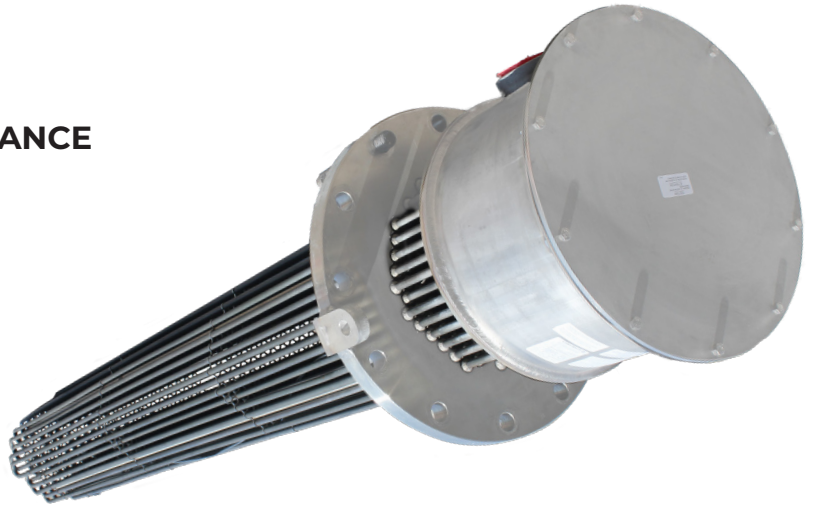
A New Enhancement to Thermon's Existing Immersion Heater Line-up

Safety and protection are the hallmarks of Thermon's Immersion Heaters. The "Increased Safety" protection method is a certified design used for equipment placed in explosive atmospheres under IECEx and ATEX design standards.

The Increased Safety immersion heaters can be custom designed to offer highly engineered solutions while meeting our customers' specific needs.

IMPROVED CERTIFICATION & COMPLIANCE

- › Certified to both IECEx & ATEX standards
- › Suitable for all gas groups (IIC)
- › Suitable for use in ambient temperatures from -60°C to +80°C
- › Power ratings up to 4MW, 690V, 3Ø, 50 or 60Hz



UPGRADED DESIGNS

- › Heater designs for large power ratings up to 4MW
- › Two different enclosure designs - round or square/rectangular (panel box type)
- › Temperature sensors to limit surface temperatures on flange and terminal box enclosures
- › Stilted or Non-Stilted Terminal Box designs

EASE OF USE

Adaptability and Flexibility:

- › Customization to allow flexibility for heater and enclosure designs to suit new and MRO
- › Square / Rectangular box has flexibility to be rotated to allow for easy installation and wiring.



Thermon aims to provide safe, reliable and mission critical industrial process heating solutions. The Increased Safety Immersion Heaters are built and tested to the customer's exact needs and specifications. With our engineering solutions we can design your next project with Thermon's high quality and safety standards.



Gain new possibilities with Thermon's "Increased Safety" Immersion Heaters



FOR ADDITIONAL INFORMATION:

www.Thermon.com



THS2002-1020

© Thermon • Information subject to change.

THERMON | 2721 PLYMOUTH DRIVE | OAKVILLE, ON L6H 5R5 | CANADA