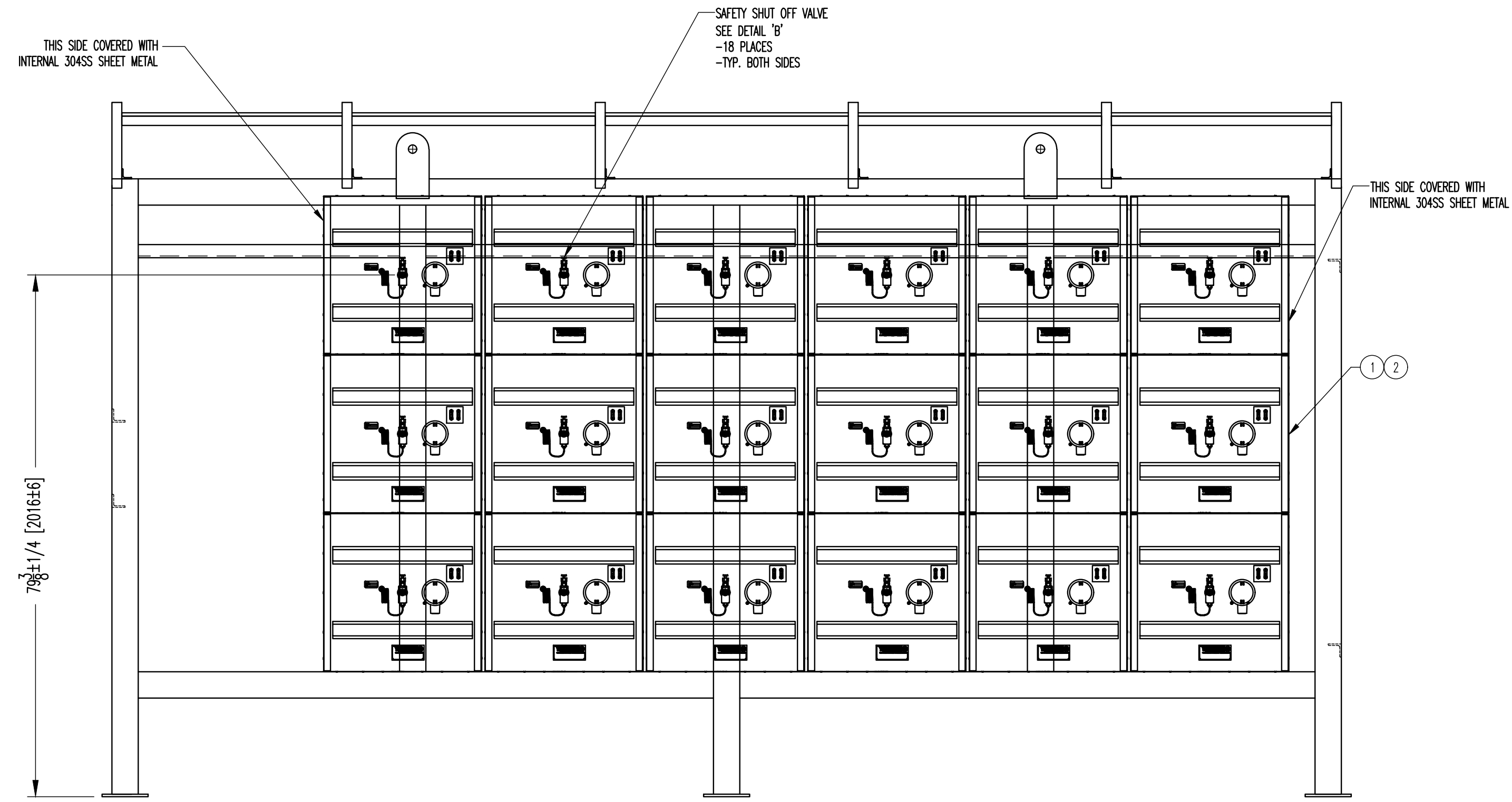
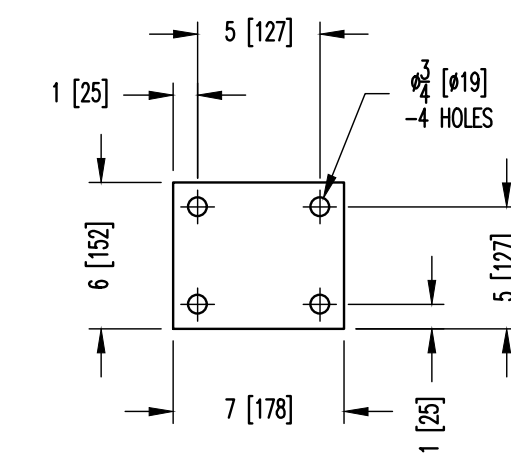


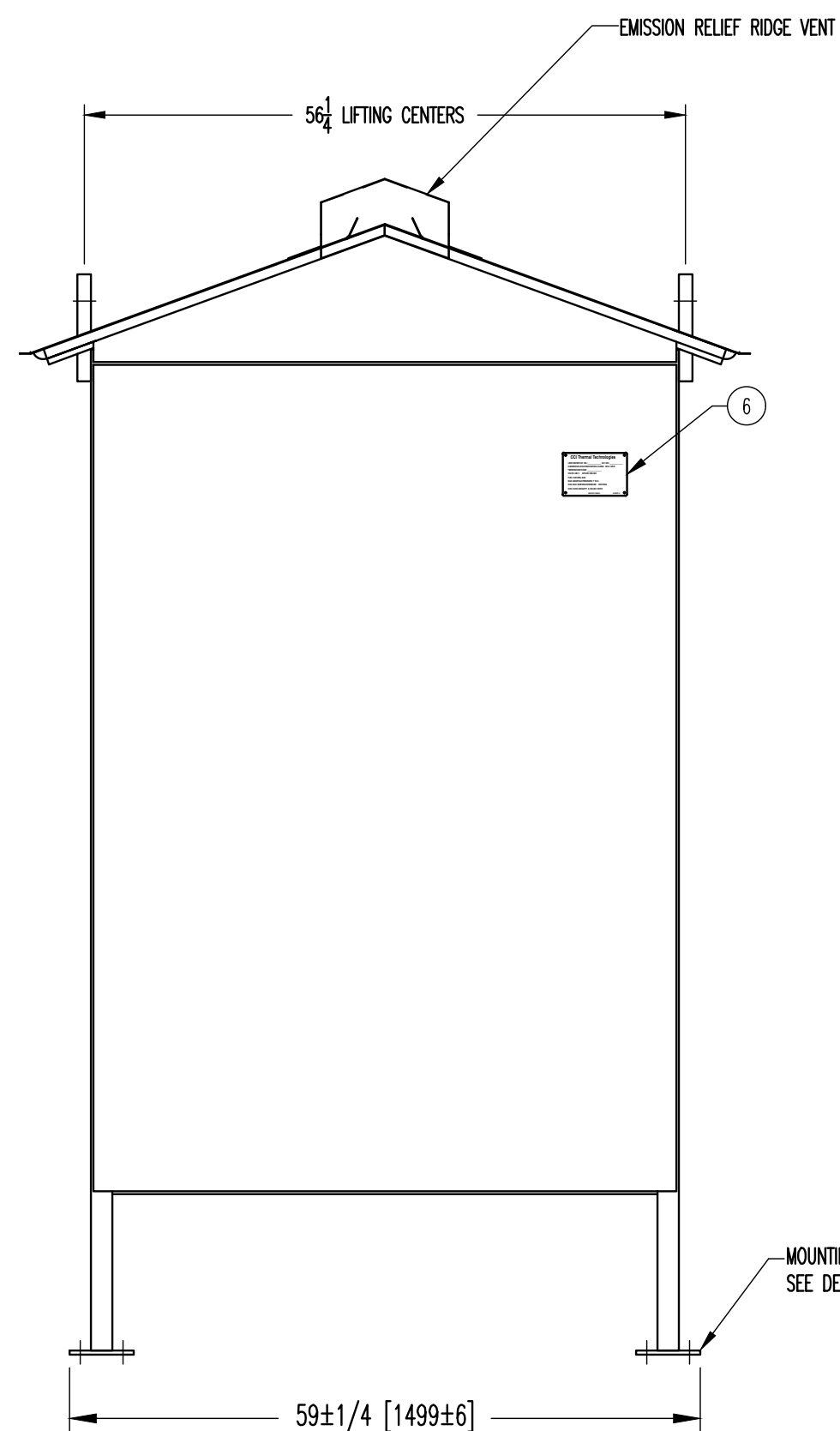
INTERNAL FRONT VIEW
(SHOWN WITHOUT SHEET METAL)



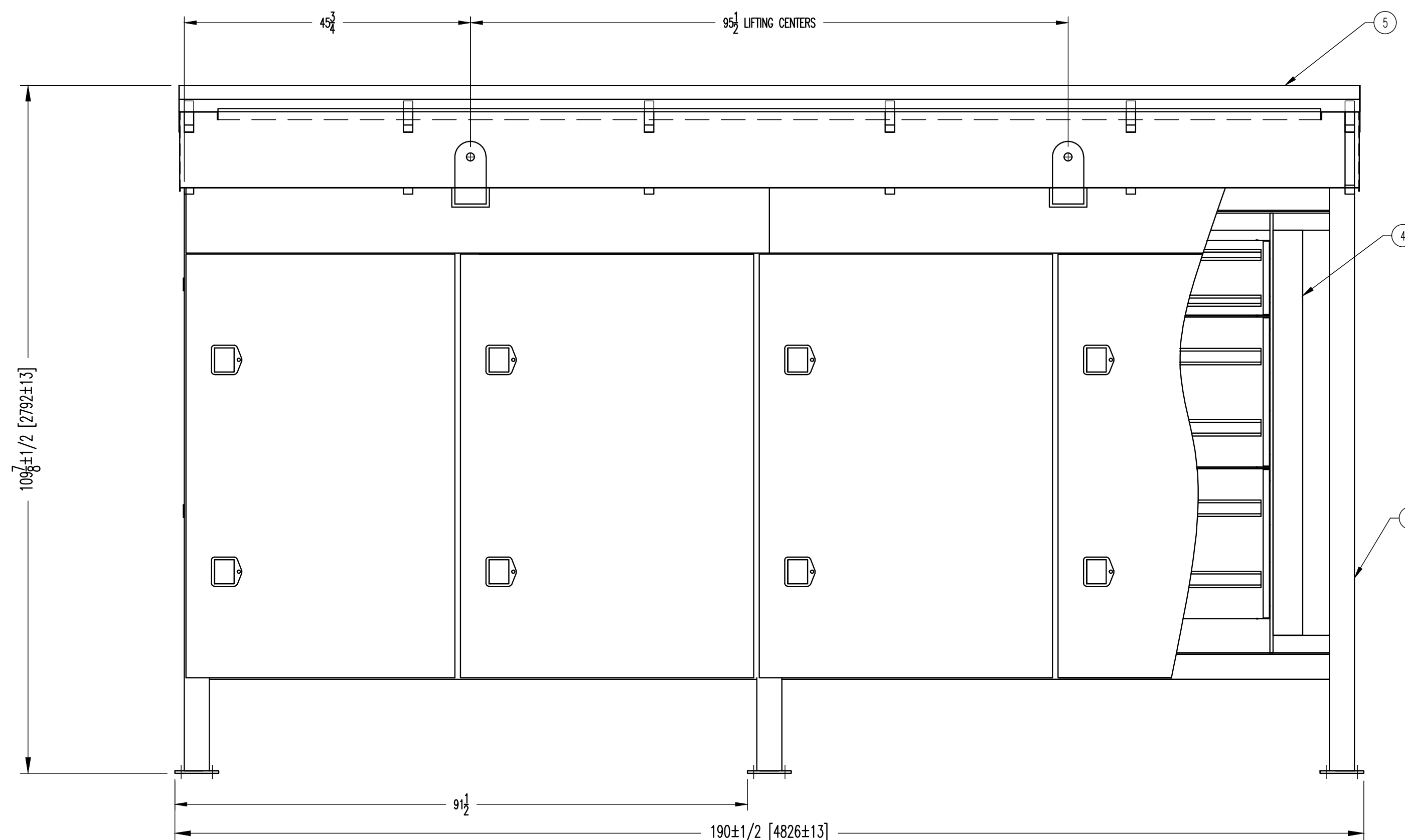
INTERNAL VIEW
(SHOWN WITHOUT SHEET METAL)



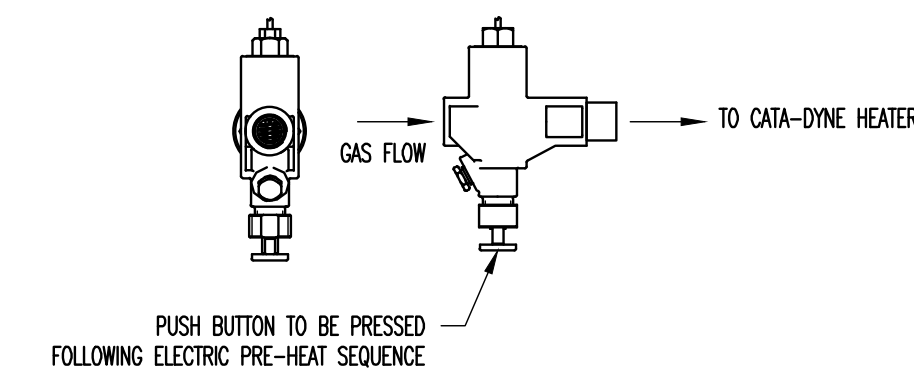
DETAIL 'A': MOUNTING PAD DETAIL



FRONT VIEW



RIGHT SIDE VIEW



DETAIL 'B': SAFETY SHUT OFF VALVE

NOTES:

- [1] ALL DIMENSIONS IN INCHES [MILLIMETRES IN BRACKETS].
- [2] NATURAL GAS CATALYTIC HEATERS ARE ANSI Z83.20/CSA2.34/FM CERTIFIED GAS APPLIANCE, SUITABLE FOR CLASS 1, DIV.1 & 2, GROUP D HAZARDOUS LOCATIONS, TEMPERATURE CODE T2C.
- [3] GAS SUPPLY PIPING TO THE HEATERS COMPLIES TO CSA B149.1 ASSEMBLY OF HEATERS COMPLY TO CSA B149.3
- [4] PAINTING:
FRAME (DET.3): GREY AMERON AMERLOCK 2 EPOXY 4-8 MILS DFT
SHEET METAL PANELS (DET.5): POWDER COAT GREY EPOXY ASA61
- [5] ALL CATADYNE HEATERS c/w 12VDC START UP JUMPER CABLES FRO ELECTRICAL PREHEAT.
- [6] ALL CATADYNE HEATERS HAVE TO BE MANUALLY STARTED BY PRESSING THE SAFETY SHUT OFF VALVE (SEE DETAIL 'B').

NO.	DESCRIPTION	PART NO.	QTY
6	NAMEPLATE	304SS A10158-74	1
5	WEATHER PROTECTION PANELS	16 GA. SHEET METAL B26016-04	1
4	CATADYNE FRAME	STEEL TSK12068-02	1
3	FRAME	STEEL D18939-01	1
2	GAS TRAIN PARTS	C26016-02	1
1	CATA-DYNE HEATER (BOREF) 24 x 24	14,000 BTU/HR	36

BILL OF MATERIAL / LISTE DE MATERIEL

TITLE: METHANE DESTRUCTOR

NO: D26016 SHEET 1 REV. 0

SCALE: NOT TO SCALE TOLERANCE UNLESS NOTED OTHERWISE
ANGULAR ± DECIM. ± 1/8 ± 3 METRIC

DRAWN BY: J.G. DEC. 14/2018
CHECKED BY:
APPROVED BY:
DIST. CODE: DATE



01	D26016-01	12VDC	1	576,000	NATURAL GAS (METHANE)	4500 LB [2045 kg]	-
ITEM NO.	CATALOG NO.	VOLTS	PHASE	BTU/HR	FLUID	APPROX. WEIGHT	ORDER VERIFICATION NO.