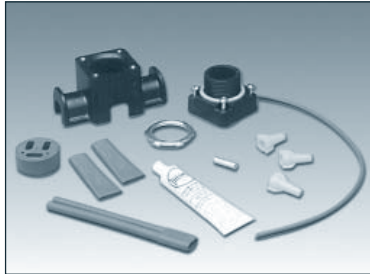


WarmTrace™ Systems Accessories

Product Specifications

TracePlus™ Nonmetallic Kits . . .

The following accessories were developed specifically for WarmTrace hot water temperature maintenance systems and are intended for use with HSX® 2100 self-regulating heating cables.



PCA-COM...circuit fabrication kit is designed to fabricate an HSX 2100 circuit with one power connection boot and one end cap. Up to three HSX heating cables can enter a junction box supported by a PCA-COM kit when additional heater cable connection boots (TBX-3L) and end caps (ET-6 or ET-8) are used.

The PCA-COM kit components include:

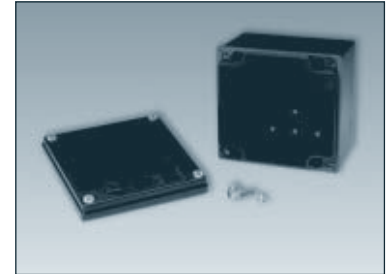
- Pipe-mounted junction box support (junction box provided by others)
- Heater cable grommet
- Power connection boot (TBX-3L)
- End caps (one ET-6 for HSX cable and one ET-8 for TSX cable)
- RTV adhesive
- Ground wire extension lead with lug
- Wire fasteners
- Installation instructions



PCS-COM...re-enterable in-line or T-splice kit is designed to fabricate outside-the-insulation splices of HSX 2100 cables. Each splice kit includes three heater cable connection boots and the end cap needed to complete a T-splice.

The PCS-COM kit components include:

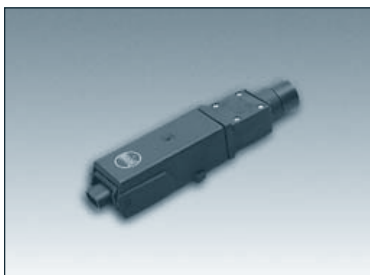
- Pipe-mounted expediter with splice cover
- Heater cable grommet
- 3 heater cable connection boots (TBX-3L)
- End caps (one ET-6 for HSX cable and one ET-8 for TSX cable)
- RTV adhesive
- Wire fasteners
- Grounding splice lug
- Installation instructions



JB-6...nonmetallic junction box is intended for use with the PCA-COM kit. The corrosion-resistant NEMA 4X unit includes a removable gasketed cover and ground lug.

TracePlus™ PowerSnap and TeeSnap Nonmetallic Connection Kits . . .

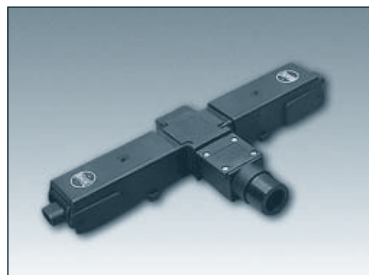
These kits have been specifically developed for rapid, troublefree installation of HSX 2105, 2120 and 2140 self-regulating heating cables. The cable can be terminated within three minutes using nothing more than a utility knife.



PowerSnap1...power connection fabrication kit is designed to terminate one self-regulating heating cable for connection to power.

The PowerSnap1 assembly includes:

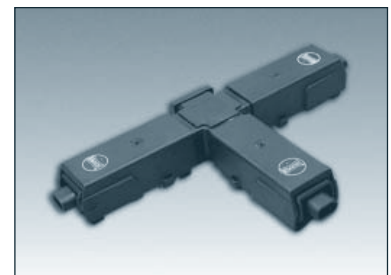
- Pipe-mounted cable/power entrance fitting
- Terminal block for power connection
- Attachment straps
- End cap (ET-6) with adhesive
- Installation instructions



PowerSnap2...power connection fabrication kit is designed to terminate two self-regulating heating cables for connection to power.

The PowerSnap2 assembly includes:

- Pipe-mounted cable entrance fitting for 2 cables and 1 power entrance
- Terminal block for power connection
- Attachment straps
- 2 end caps (ET-6) with adhesive
- Installation instructions



TeeSnap...allows three self-regulating heating cables to be spliced together.

The TeeSnap assembly includes:

- Pipe-mounted cable entrance fitting for 3 cables
- Attachment straps
- End cap (ET-6) with adhesive
- Installation instructions



THERMON . . . The Heat Tracing Specialists®

ISO 9001
REGISTERED

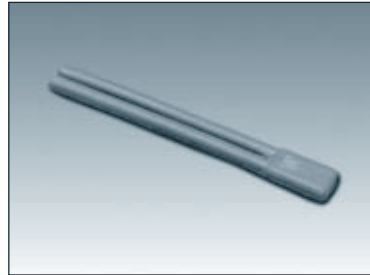
100 Thermon Dr. • PO Box 609 • San Marcos, TX 78667-0609
Phone: (512) 396-5801 • Facsimile: (512) 754-2431 • **1-800-730-HEAT**
www.thermon.com In Canada call **1-800-563-8461**

Cable End Terminations, Attachment Tape and Caution Label . . .



ET-6C...end termination kits are designed to properly terminate the end of an HSX 2100 heating circuit (away from power).

PCA-COM and PCS-COM kits include end caps, RTV adhesive, caution label and termination instructions. PowerSnap and TeeSnap kits include ET-6C end cap(s), RTV adhesive, caution label and termination instructions. (ET-6 end caps are also available in bulk)



TBX-3L...power connection boot is used to prepare additional heating cable for connection to power through a PCA-COM kit. One TBX-3L boot is provided with each PCA-COM kit. Three TBX-3L boots are provided with each PCS-COM kit. (Also available as the TBX-3LC kit with RTV adhesive and termination instructions.)



FT-1L...fixing tape is used for attaching the heating cable to piping every 12" (30 cm) or as required by code or specification. FT-1L may also be used for attaching pipe-mounted expediter in circuit fabrication and splice kits. Tape is 1/2" (13 mm) wide x 108' (33 m) long.

Max. Exposure Temp 185°F (85°C)
Min. Installation Temp -20°F (-29°)



CL...caution labels (vinyl-based peel and stick) should be installed on the thermal insulation weather barrier. In accordance with the NEC, electrically heated pipelines and vessels are to be clearly identified "at frequent intervals along the pipeline or vessel." Caution labels should be placed at 10'-20' (3-6 m) intervals or as required by code or specification.

Certifications/Approvals . . .



Approvals apply when used with Thermon electric heat tracing cables. PowerSnap1, PowerSnap2 and TeeSnap are UL Listed.

