



PRODUCT DATASHEET

SYSTEMS ACCESSORIES

HLX™

TRACEPLUS™ NONMETALLIC KITS

The following accessories were developed specifically for HLX hot water temperature maintenance systems and are intended for use with HLX self-regulating heat trace.



PCA-COM circuit fabrication kit is designed to fabricate an HLX circuit with one power connection boot and one end cap. Up to three HLX heat tracers can enter a junction box supported by a PCA-COM kit when additional connection boots (TBX-3L) and end caps (ET-6) are used.

The PCA-COM kit components include:

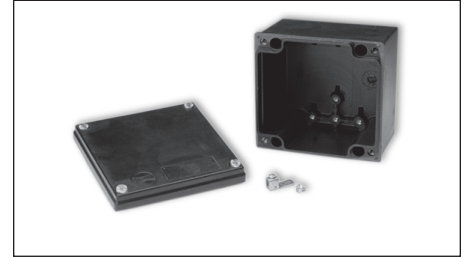
- Pipe-mounted junction box support (junction box provided by others)
- Heat trace grommet
- Power connection boot (TBX-3L)
- End caps (one ET-6 for HLX)
- RTV adhesive
- Ground wire extension lead with lug
- Wire fasteners
- Installation instructions



PCS-COM re-enterable in-line or T-splice kit is designed to fabricate outside the insulation splices of HLX. Each splice kit includes three heat trace connection boots and the end cap needed to complete a T-splice.

The PCS-COM kit components include:

- Pipe-mounted expediter with splice cover
- Heat trace grommet
- 3 heat trace connection boots (TBX-3L)
- End caps (two ET-6 for HLX)
- RTV adhesive
- Wire fasteners
- Grounding splice lug
- Installation instructions



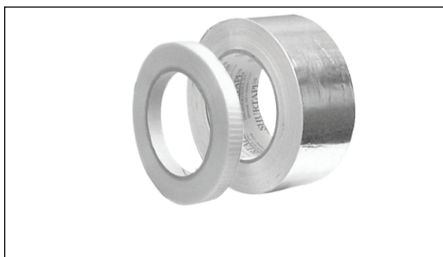
JB-K nonmetallic junction box is intended for use with the PCA-COM kit. The corrosion-resistant NEMA 4X unit includes a removable gasketed cover and ground lug.

CABLE END TERMINATIONS, ATTACHMENT TAPE AND CAUTION LABELS



ET-6C end termination kits are designed to properly terminate the end of an HLX heating circuit (away from power).

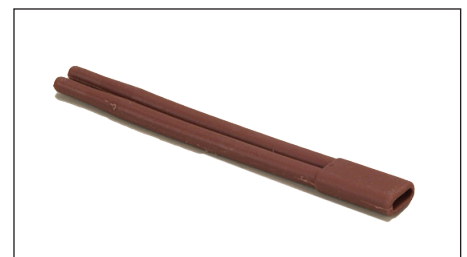
PCA-COM and PCS-COM kits include end caps, RTV adhesive, caution label and termination instructions.



FT-1L fixing tape is used for attaching the heat trace to piping every 30 cm (12") or as required by code or specification. FT-1L may also be used for attaching pipe mounted expeditors in circuit fabrication and splice kits.

AL-20L aluminium fixing tape for continuous (longitudinal) covering and/or circumferential banding cable to plastic piping and/or equipment.

Item Number	Max. Temp. (Exposure)	Min. Temp. (Exposure)	Size (mm x m)
FT-1L	93°C (200°F)	5°C (40°F)	12 x 33
AL-20L	66°C (151°F)	5°C (40°F)	50 x 46



TBX-3L power connection boot is used to prepare additional heat trace for connection to power through a PCA-COM kit. One TBX-3L boot is provided with each PCA-COM kit. Three TBX-3L boots are provided with each PCS-COM kit.



CL caution labels (vinyl-based peel and stick) should be installed on the thermal insulation weather barrier. In accordance with the NEC, electrically heated pipelines and vessels are to be clearly identified "at frequent intervals along the pipeline or vessel." Caution labels should be placed at 3-6 m (10'-20') intervals or as required by code or specification.

CERTIFICATIONS/APPROVALS



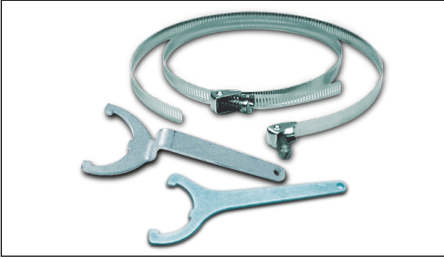
Approvals apply when used with Thermon electric heat tracing.



PRODUCT DATASHEET

SYSTEM ACCESSORIES

HLX™



B-4, B-10, B-21 stainless steel attachment bands for securing Thermon JB-K nonmetallic kits and XP-1-140x140 mounting brackets to pipes. For pipes up to 100 mm, 250 mm and 530 mm diameters, respectively.