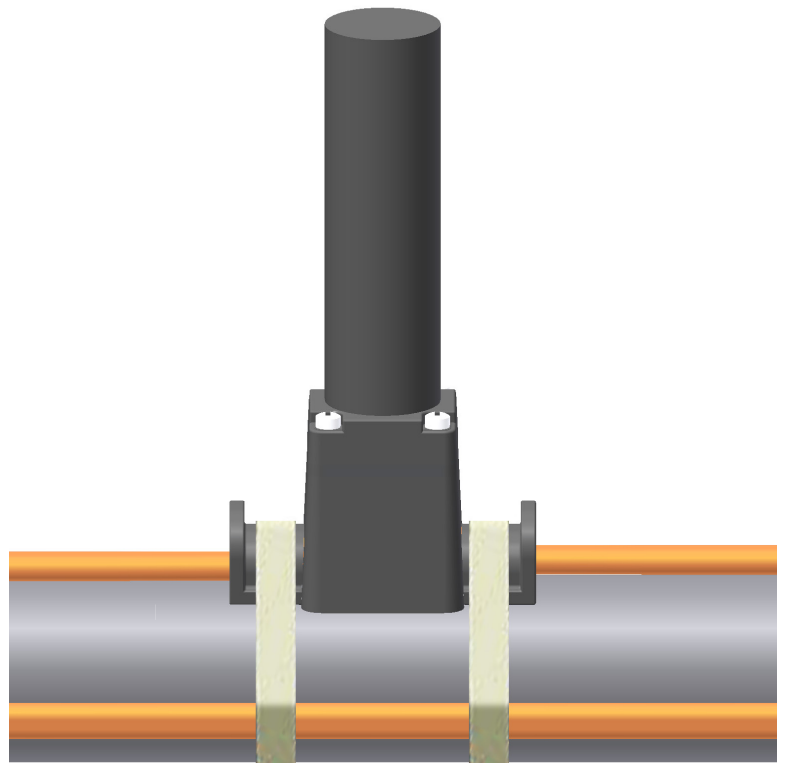


PCS-COM

In-line and T-Splice Kit

INSTALLATION PROCEDURES

For In-Line Splice Connection, T-Splice Connection, or
End Termination Applications
for **FLX** and **HSX** Heat Tracing



PCS-COM

The following installation procedures are suggested guidelines for the installation of Thermon's PCS-COM connection systems. They are not intended to preclude the use of other methods and good engineering or field construction practices.

Receiving, Storing and Handling

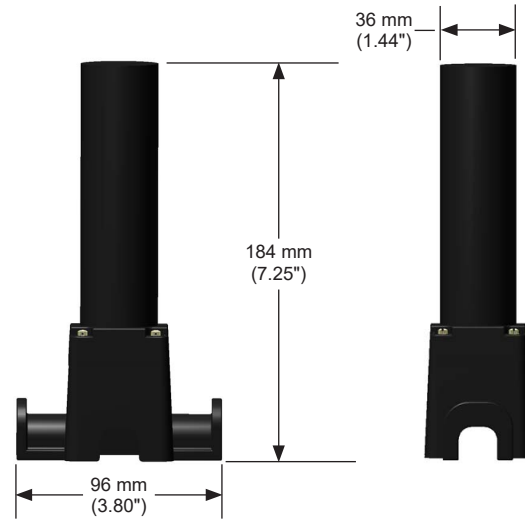
1. Inspect materials for damage incurred during shipping.
2. Report damages to the carrier for settlement.
3. Identify parts against the packing list to ensure the proper type and quantity has been received.
4. Store in a dry location.

Kit Contents



Item	Quantity	Description
1	1	Expediter Assembly Splice cap Grommet Expediter Base
2	1	Caution Label
3	3	Splice Connection Boots
4	2	End Cap ET-6
5	3	Wire Nut
6	2	RTV Tube

Dimensions



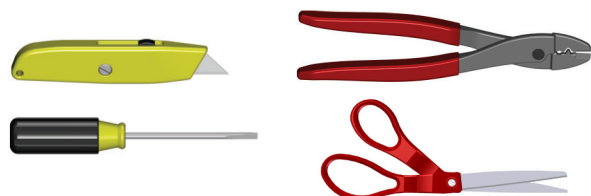
Installation Precautions

- To minimize the potential for arcing and fire caused by product damage or improper installation use ground-fault protection. The National Electrical Code (NEC) and Canadian Electrical Code (CEC) require ground-fault protection of equipment for each branch circuit supplying electric heat tracing.
- Installation must comply with Thermon requirements and be installed in accordance with the NEC, CEC, or any other applicable national and local codes.
- Component approvals and performance ratings are based on the use of Thermon specified parts only. User supplied power connection fittings must be listed or certified for intended use.
- De-energize all power sources before opening enclosure.
- Keep ends of heating cable and kit components dry before and during installation.
- The kit instructions should be used in conjunction with the installation instructions for the heating cable and other accessory items.

Certifications/Approvals



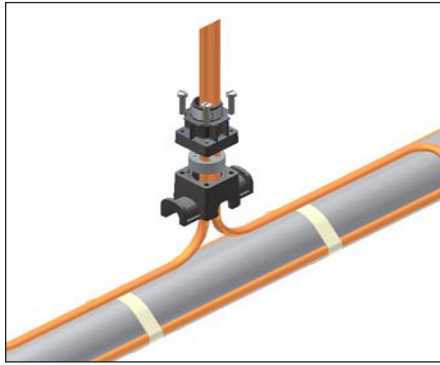
Tools Required



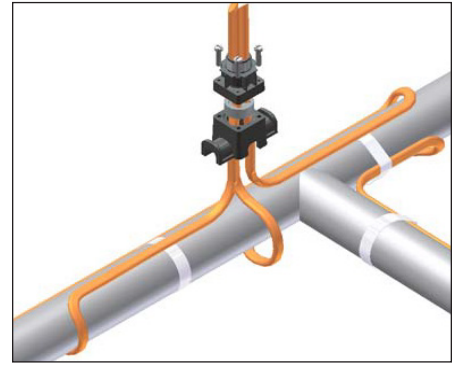
Power Connection for FLX and HSX



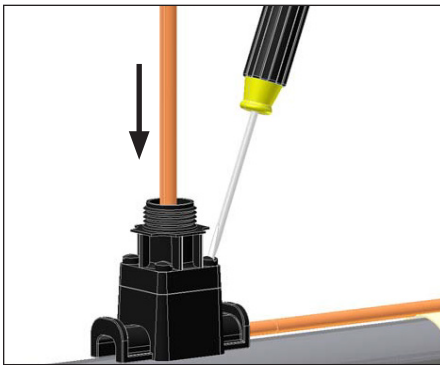
- 1.** For one, two or three trace heaters. Insert trace heater into expediter, grommet, and NPT threaded cap.



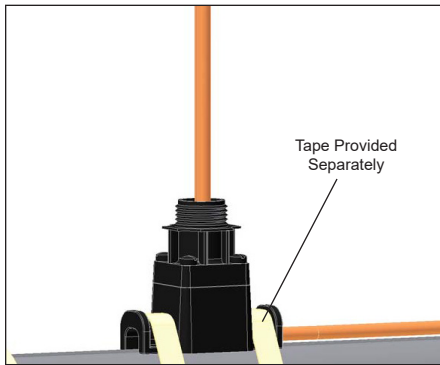
- 2.** Two trace heaters.



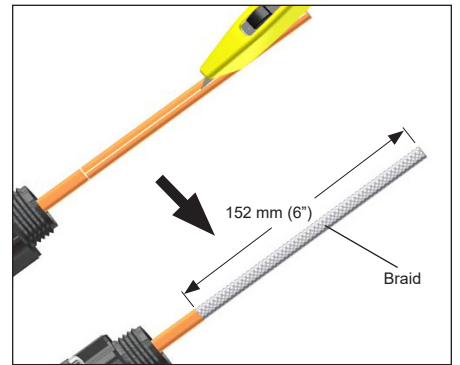
- 3.** Three trace heaters.



- 4.** Slide expediter toward pipe and secure cap to base with the captive screws.



- 5.** Mount expediter to pipe using two (2) circumferential bands of 13 mm (½") wide FT-IL tape.



- 6.** Cut and remove overjacket.

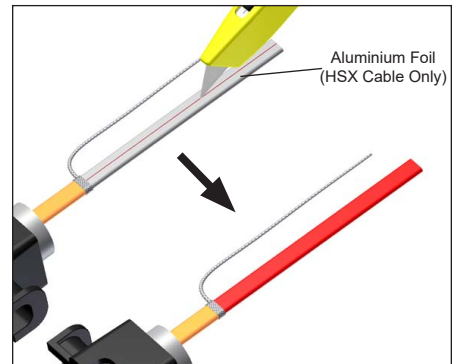
 **Do not cut metallic braid.**



- 7.** Separate braid strands at edge of overjacket and pull trace heater through opening.

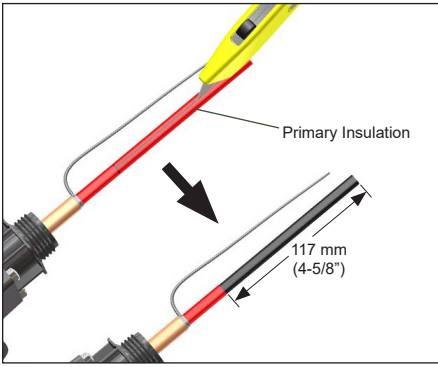


- 8.** Twist braid into a pigtail. Trim ends of braid.

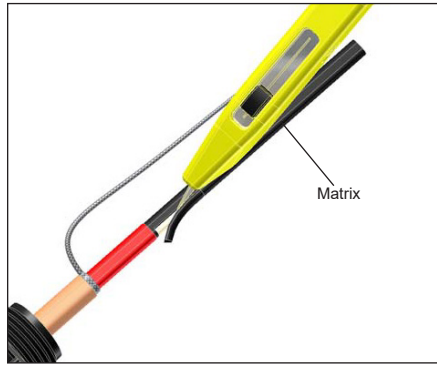


- 9.** Gently score the aluminium foil layer and peel away. (HSX trace heaters cables only).

PCS-COM



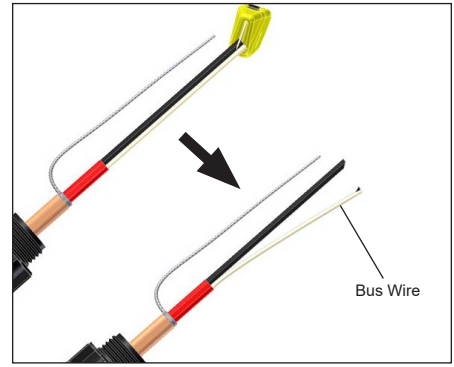
10. Cut and remove primary insulation jacket.



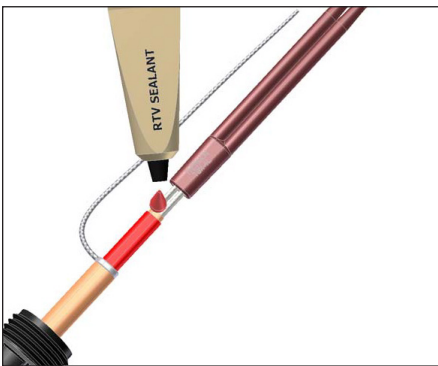
11. Skive outside of black matrix.



Do not cut bus wire strands.



12. Cut V-Notch in matrix and pull bus wires from matrix. Cut and remove center matrix.

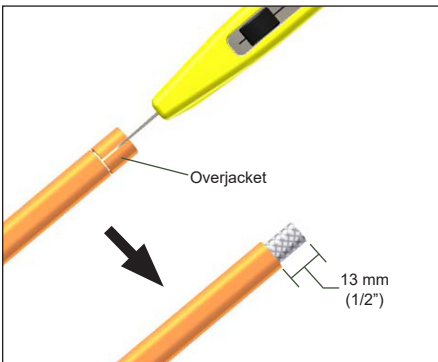


13. Apply a liberal amount of RTV sealant to trace heater.

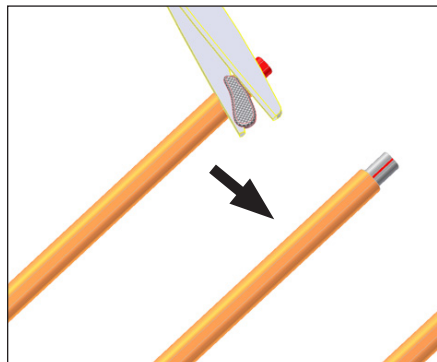


14. Slide boot onto the end of the trace heater.

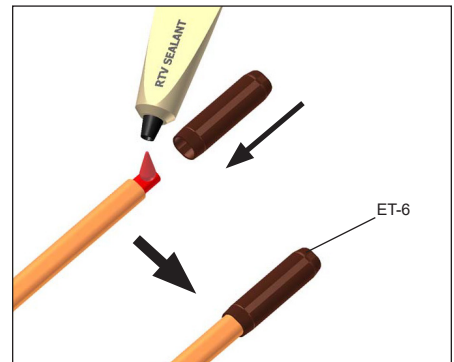
End Termination for FLX and HSX



15. Cut and remove overjacket.

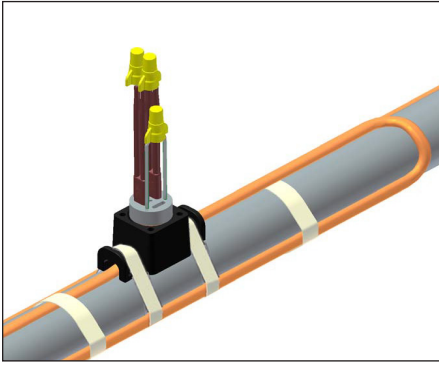


16. Trim ends of braid. Gently score the aluminium foil layer (HSX tracer only) and peel away.

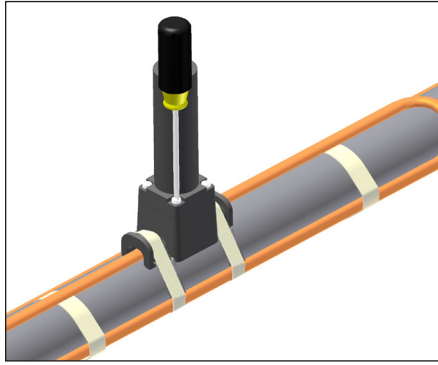


17. Apply a liberal amount of RTV sealant to trace heater and inside end cap. Slide end cap onto end of trace heater.

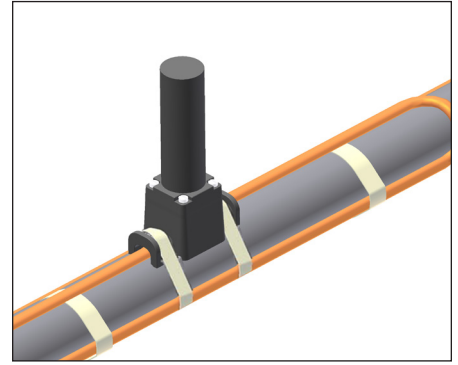
INSTALLATION PROCEDURES



18. Complete system wiring. Connect bus wires using wire nuts. Connect braid wires using wire nut. See wiring details for splice connections.

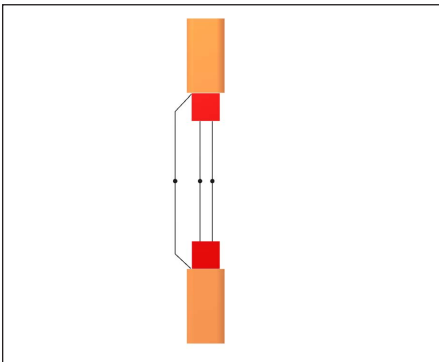


19. Install splice cap using 4 captive screws.

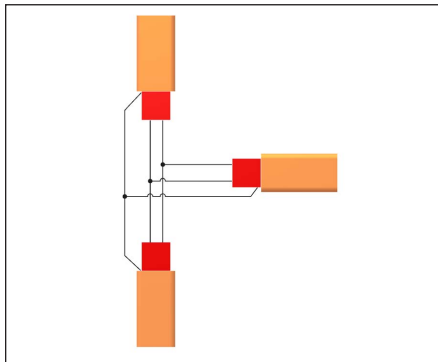


20. Installation complete.

Typical Wiring Details

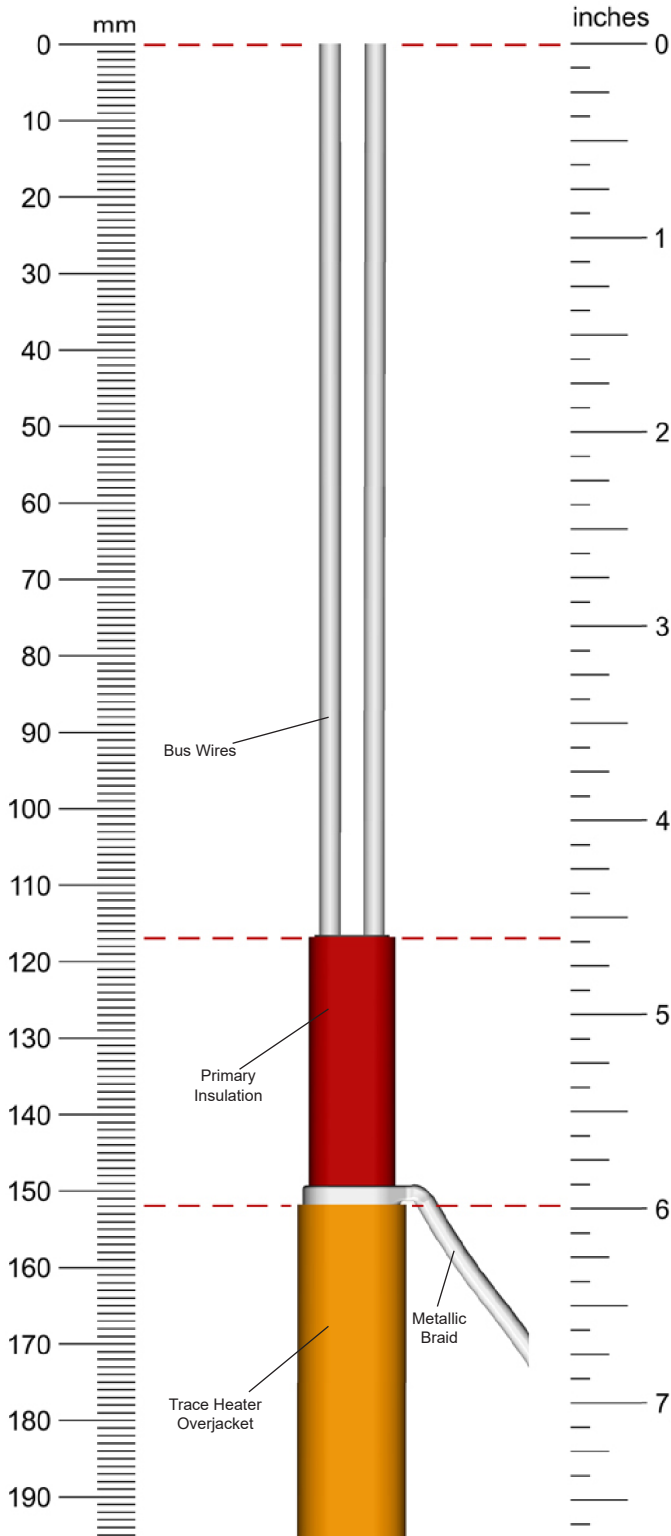


In-Line Splice

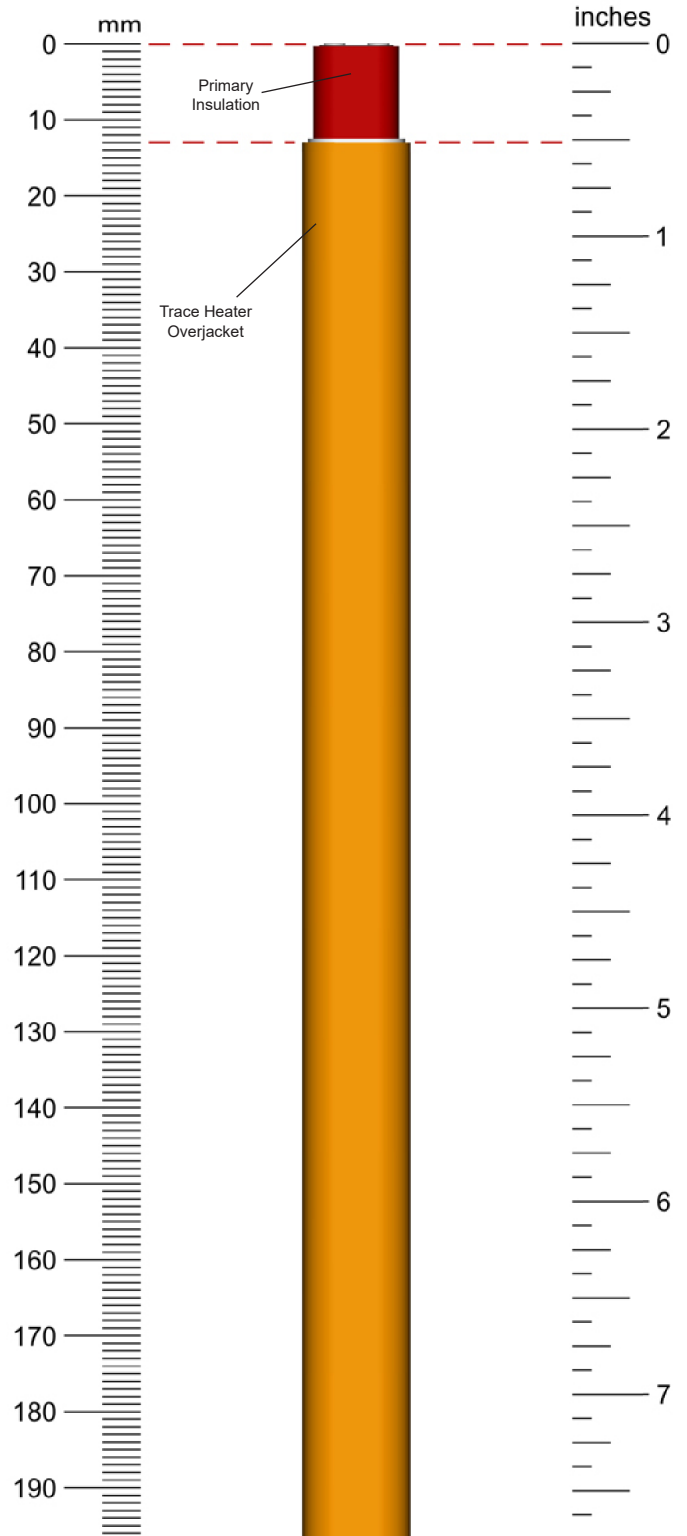


T-Splice

Trace Heater Take-off for FLX and HSX



For Power Connection Boot Termination



For End Cap Termination

NOTE: Images may not be printed to scale.

