



# GENESIS CONTROLLER

## CONTROL AND MONITORING SYSTEM

# QUICK START GUIDE

The Genesis Controller HMI serves as the central user interface.

- ▶ View Status For 72 Circuits On Dashboard
- ▶ Allows Up To 20 RTD's Per Circuit
- ▶ Communications to Host Computer via Ethernet Communications
- ▶ Reduced Wiring And Connections
- ▶ Each RTD is Addressable
- ▶ Control Panel - IP66 IP Rating

The Genesis Controller has a simple "glove touch" interface that allows the operator to adjust and monitor heat tracing circuits. The following steps show navigation of the controller's basic functions.

**OVERVIEW**

The Overview screen displays information on any circuit.

**"HAMBURGER" MENU**

To edit circuit values, log in by touching the "Hamburger" menu.

Select **Admin Login**.

**OVERVIEW**

Rotate the teardrop cursor or use the arrows to select a circuit.

Touch inside the circuit dial to show the Circuit Dashboard.

**CIRCUIT DASHBOARD**

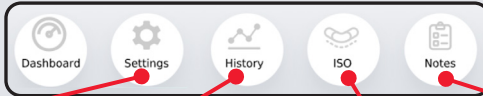
Touch any value on circuit details to edit a setpoint.

**NUMBER PAD**

Edit Maintain Temp, Alarms, and Control Band using the number pad.

Select check to accept new setpoint.

Select an icon at the bottom of any Circuit Screen:

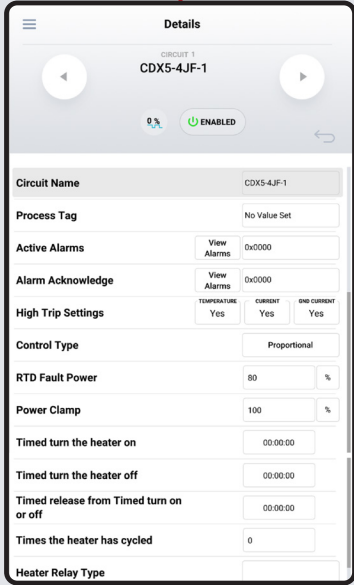


Select **Settings** to adjust variables specific to a circuit.

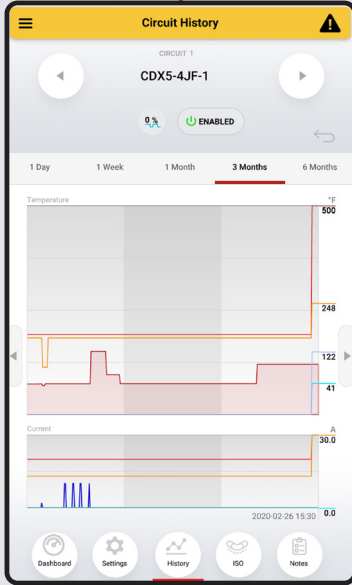
Select **History** to view up to 6 months of data for the circuit.

Select **ISO** to view the isometric drawing for the circuit.

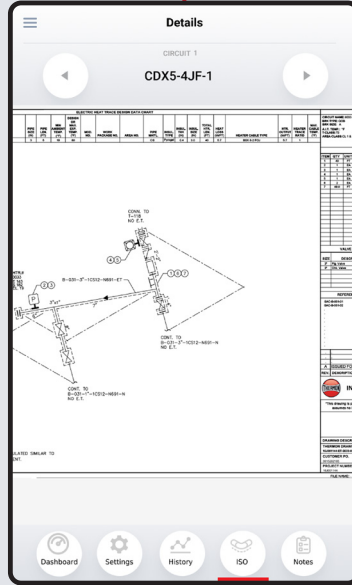
Select **Notes** to add comments to a circuit.



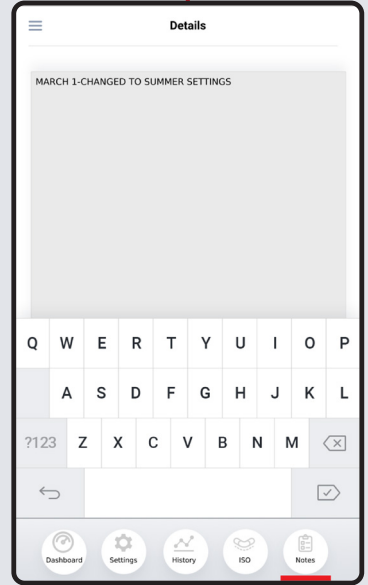
SETTINGS



HISTORY

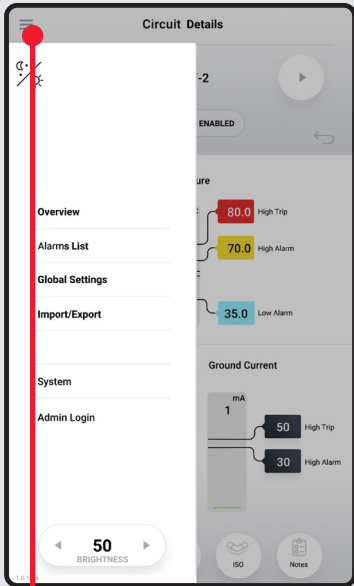


CIRCUIT ISO

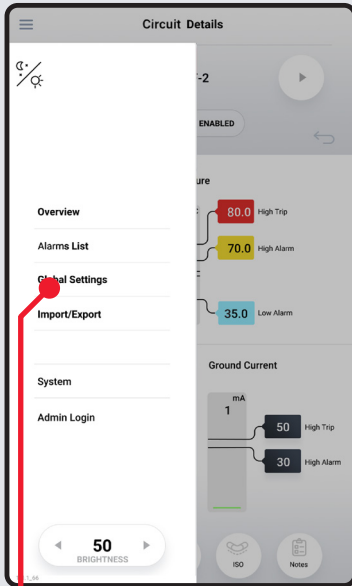


NOTES

"HAMBURGER" MENU

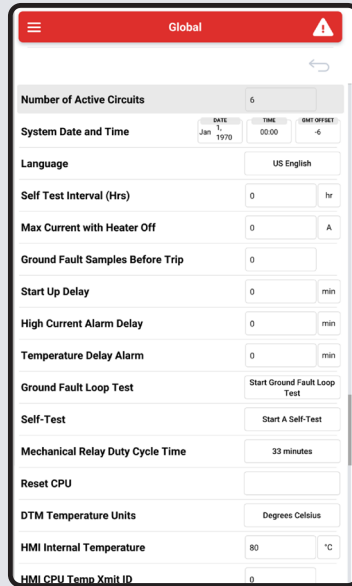


Select the "Hamburger" menu to make global adjustments.

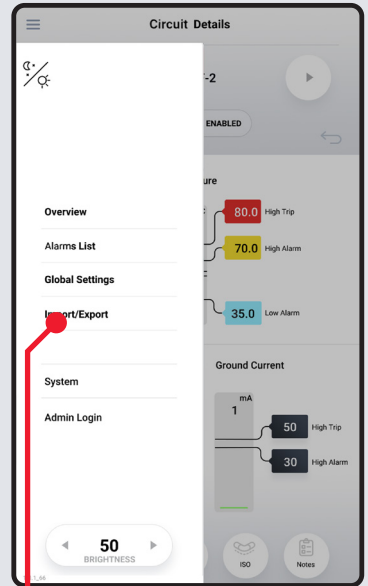


Select **Global Settings** to adjust how the Genesis displays system-wide variables such as language, temperature, system time.

GLOBAL SETTINGS



Select any value in Global Settings to make adjustments to circuit level or updates to Global Settings.



Select **Import/Export** to import or export ISO drawings and circuit-level details.



Corporate Headquarters: 7171 Southwest Parkway · Building 300, Suite 200 · Austin, TX 78735 · Phone: 512-690-0600  
For the Thermon office nearest you visit us at . . . [www.thermon.com](http://www.thermon.com)

Form TEP0217-0820 © Thermon, Inc. · Printed in U.S.A. · Information subject to change.