

AC Control Panels

Fastrax™ alternating current (AC) control panels provide an integrated solution for electric rail heating of any switch layout or configuration.

Each control panel incorporates leading technology to ensure efficient and economical operation and is pre-wired and tested for ease of installation and servicing.



Features

- Ground fault protection
- Individual heater circuit breaker protection
- Mounted safety/service disconnect on deadfront
- Terminal connections for field wiring
- ArcticSense snow sensing
- Internal panel heater
- Heavy duty stainless steel panel, piano hinge and three point latch
- Tamper proof, safe “dead-front” design
- Manual buttons and annunciation lights
- UL approved electrical components
- NEMA 4X construction for increased safety and protection against water penetration
- Available from 120V to 600V

Benefits

- Energy saving circuitry
- Full automatic control
- Proven long-life components
- Clear labelling and annunciation, basic electrical schematic affixed to panel
- Three point latch accepts standard railroad padlocks
- Convenient localized wiring connections with clear field wiring identification

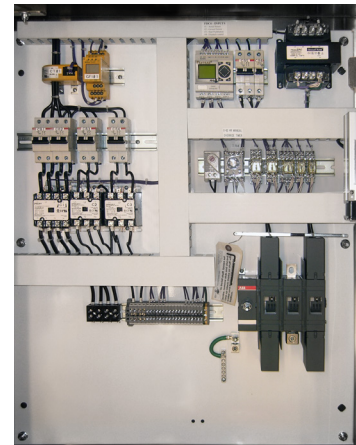


Figure 16 - One Switch Design

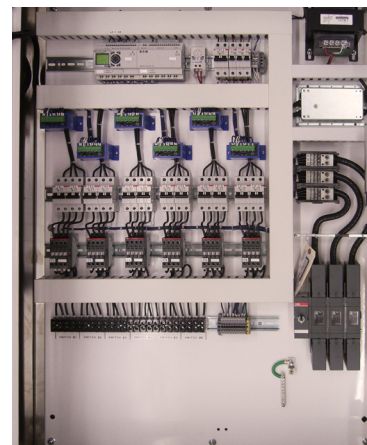


Figure 17 - Six Switch Design

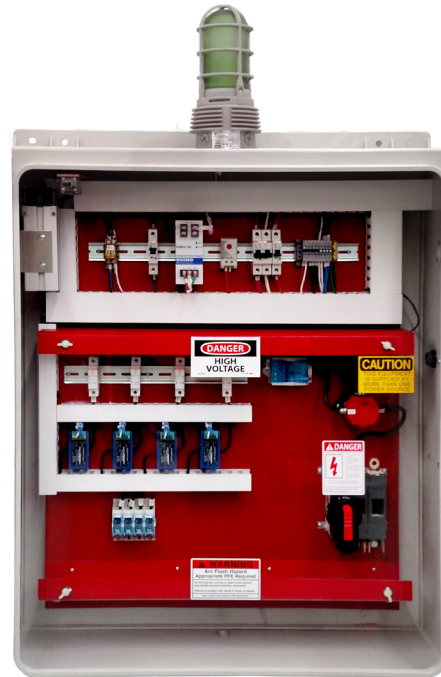
Model Coding

G	CP	2	2	1	48	100
Model Series	Application Type	Total Heaters 2, 4, 6	Voltage 05 - 120V 1 - 208V 2 - 240V 4 - 480V 6 - 600V	Phase 1 - 1 Ph 3 - 3 Ph	Kilowatts 24, 32, 35, 48	Disconnect Amps 100, 175, 200
	CP – Mainline Control Panel SC – Scanner & DED Control Panel SFC – Spring Frog Control Panel MPC – Movable Point Frog Control Panel YP - Yard Panel					

DC Control Panels

Fastrax™ direct current (DC) control panels provide an integrated electric rail heating solution for any switch layout or configuration in rail systems using DC power. DC control panels allow the use of available DC power for switch heating applications, replacing the need for electrical infrastructure required to supply AC power feeds.

Each control panel incorporates leading technology to ensure efficient and economical operation and is pre-wired and tested for ease of installation, operation, and servicing.



Features

- Controls up to 10 circuits or switches
- ArcticSense snow sensing
- Adjustable or indefinite run time
- NEMA 4 fiberglass enclosure
- Hermetically sealed contactors
- 1000 V DC rated components
- Load breaking disconnect switch
- Isolated high voltage section
- GPO-3 nonconductive backpan
- Dispatch control and indication
- Custom designs and layouts available

Benefits

- Replaces the need for costly AC power feeds for rail and switch heating applications
- Arc free contactor switching
- Finger safe components prevent accidental contact
- Fully automatic, manual, and dispatch control
- Clear labelling and annunciation, basic electrical schematic affixed to panel
- Hall effect current sensors provide air gap between low voltage and high voltage
- Designs available specifically for 3rd rail power sources

Model Coding

D Model Series D – Direct Current	CP Application Type CP – Control Panel	2 Total Circuits 1, 2, 3, 4, 5, 6, 7, 8, 9, 10	6 Voltage 6 – 600V 7 – 750V	48 Kilowatts 24, 32, 35, 48	200 Disconnect Amps 100, 175, 200
---	--	---	--	---	---