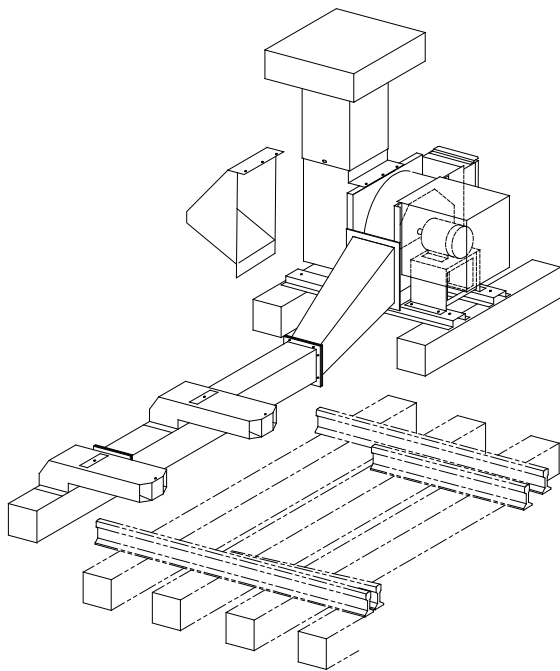


Winter Railway Switch Protection:

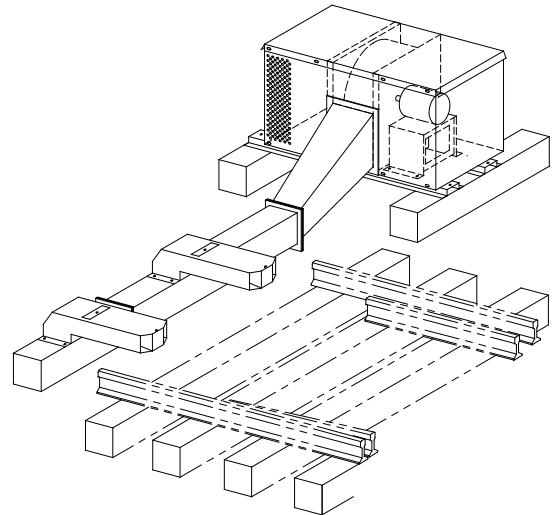
Horizontal Air Curtains

HAC & QHAC Series

Ordering Guide



Quiet



Note: On December 16, 2016, CCI Thermal acquired the railroad track and switch heating and snow removal business of Hovey Industries Inc. CCI Thermal now designs and manufactures HELLFIRE gas fired hot air blowers, INFERNO gas blowers, horizontal air curtains, tie ducts, track ducts, replacement parts and associated equipment.

A. ORDERING INFORMATION

A.1 HAC Specification

1. What is the size(#) of the switch to be protected? Select Horsepower required.

Switch Size	Horsepower	Comments
#14 or smaller	5	
#20 or smaller	7.5	Recommended when crossing multiple tracks. Any switch size.

2. What voltage and power is available at the site?

HP	Volts	Phase	HAC FL Amps
5	208	3	13.2
	240	1	21.0
	460	3	6.0
	575	3	5.1
7.5	208	3	21.0
	240	1	33.0
	460	3	9.5
	575	3	7.9

3. Select either crib or tieduct system.

4. Select the appropriate clearance, (track center line to blower flange / rise) - see following pages for:

4.1 Crib duct systems, 120"/12", 90"/6" or 72"/0"

4.2 Tie duct systems, 126"/12", 116"/6", or 116"/0"

5. Is the site close to a residential area? Is sound reduction required?

5.1 Select either HAC or QHAC model.

Acceptable Sound Level	Model
65 dbA at 50 ft	HAC
60 dbA at 50 ft	QHAC

6. Does the site experience significant snow accumulation?

6.1 Select height of intake required, High or extra low profile.

Snow Accumulation	Intake	Valid Clearance Layouts
Less than 20"	Extra Low Profile	All
More than 20"	High Profile	120" Only

7. If the power supply capacity is limited and sequential starting is required, is the delay start timer required?

8. For automatic operation or energy conservation, is the temperature switch required?

9. For special geometry considerations provide a site layout and consult with CCI Thermal engineering.

All units have Remote/Auto/Manual control and may be fitted with optional temperature switch, or timer. If remote operation is required, the customer has to provide a set of contacts rated at 240Vac and 1 amp minimum.

A.2 HAC Series Horizontal Air Curtains (Standard)

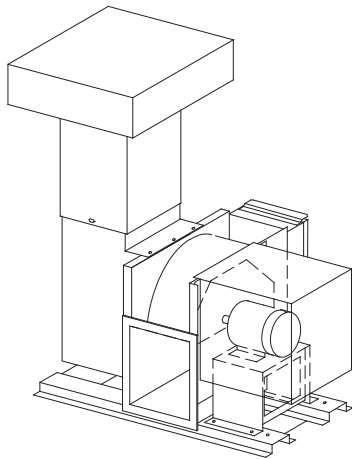
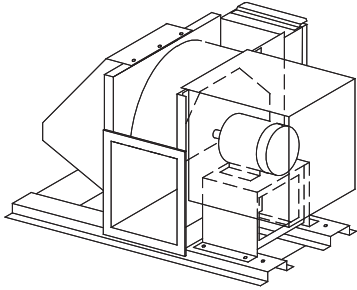


Table 1 – HAC Series Horizontal Air Curtains - High Profile Intake

HP	Volts	Phase	1 Track	Multiple Tracks
5	208	3	HAC7128	-
	240	1	HAC7028	-
	460	3	HAC7228	-
	575	3	HAC7328	-
7.5	208	3	HAC6729	HAC6730
	240	1	HAC6629	HAC6630
	460	3	HAC6829	HAC6830
	575	3	HAC6929	HAC6930

Table 2 – HAC Series Horizontal Air Curtains - Low Profile Intake



HP	Volts	Phase	1 Track	Multiple Tracks
5	208	3	HAC7125	-
	240	1	HAC7025	-
	460	3	HAC7225	-
	575	3	HAC7325	-
7.5	208	3	HAC6726	HAC6727
	240	1	HAC6626	HAC6627
	460	3	HAC6826	HAC6827
	575	3	HAC6926	HAC6927

A.3 QHAC Series Horizontal Air Curtains (Quiet - for Residential Areas)

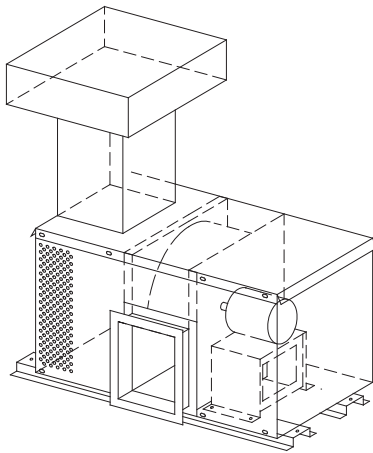


Table 1 – QHAC Series Horizontal Air Curtains - High Profile Intake

HP	Volts	Phase	1 Track	Multiple Tracks
5	208	3	HAC7135	-
	240	1	HAC7035	-
	460	3	HAC7235	-
	575	3	HAC7335	-
7.5	208	3	HAC6736	HAC6737
	240	1	HAC6636	HAC6637
	460	3	HAC6836	HAC6837
	575	3	HAC6936	HAC6937

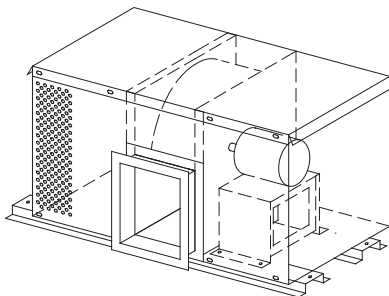


Table 2 – QHAC Series Horizontal Air Curtains - Low Profile Intake

HP	Volts	Phase	1 Track	Multiple Tracks
5	208	3	HAC7133	-
	240	1	HAC7033	-
	460	3	HAC7233	-
	575	3	HAC7333	-
7.5	208	3	HAC6723	HAC6724
	240	1	HAC6623	HAC6624
	460	3	HAC6823	HAC6824
	575	3	HAC6923	HAC6924

A.4 HAC and QHAC Control Options

Table 1 – Control Options

Control Option	Part No.
Delay Start Timer	18420
Temperature Switch	18425

A.5 Crib Duct Systems

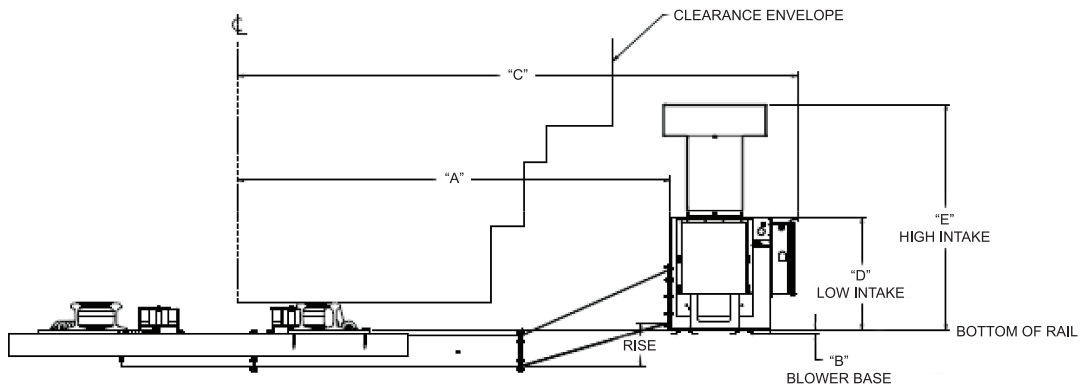
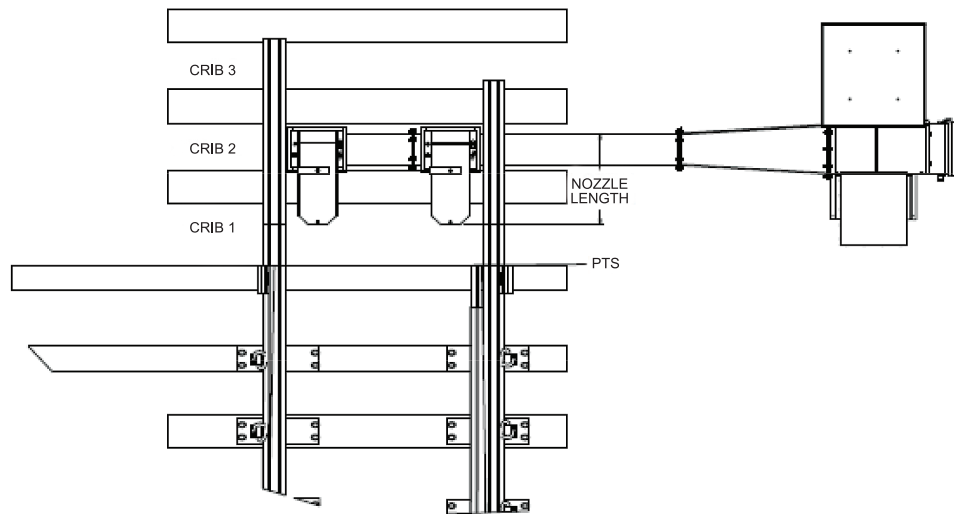


Table 1 – Crib Duct Systems

Nominal Clearance/Rise	Crib Duct Systems					Nozzle Length	
	A	B	C	D	E	25 IN.*	40 IN.**
120" / 12"	120.5	1.4	155.1	30.3	60.9	15122	15125
90" / 6"	90.3	7.2	124.8	24.6	55.3	15121	15124
72" / 0"	72.5	13.1	107.1	18.6	49.3	15120	15123

*Systems with 25" nozzles are intended for installation in the second, or 40" nozzles in the third crib ahead of the switch points.

**40" nozzles are recommended for use with Quiet systems for maximum noise reduction.

A.6 Tie Duct Systems

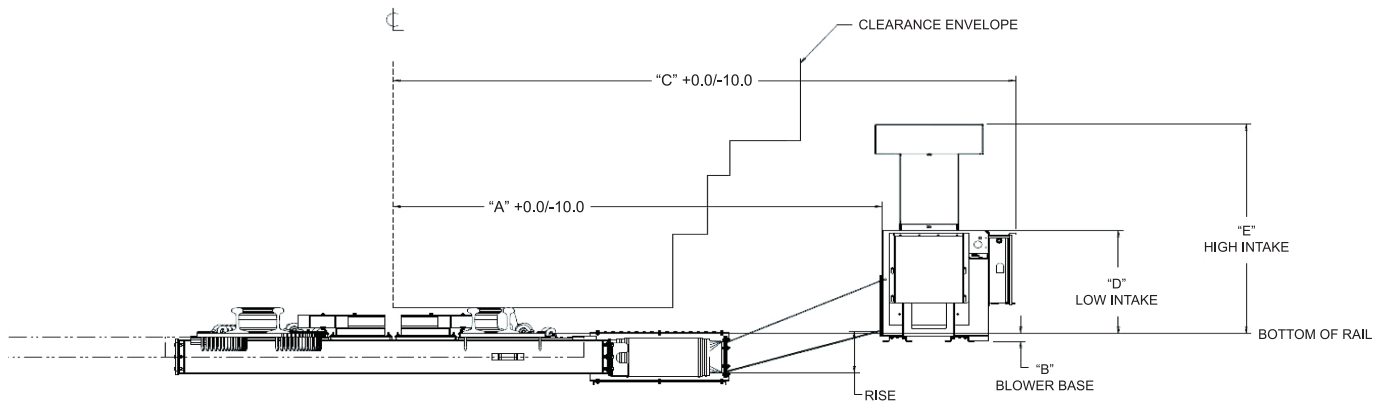
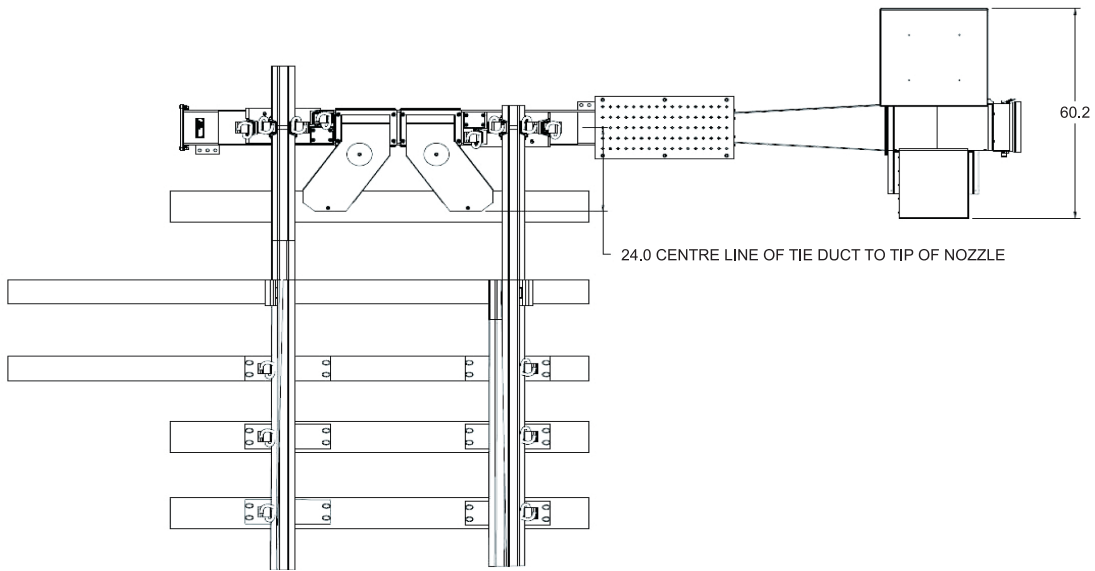


Table 1 – Tie Duct Systems

Tie Duct Systems							
Nominal Clearance/Rise	Dimensions (in.)					Rail Base Width	
	A	B	C	D	E	6 IN.	5.5 IN.
126" / 12"	126.2	2.4	160.7	29.5	60.0	14320	14323
116" / 6"	115.7	8.1	150.2	23.7	54.2	14321	14324
116" / 0"	115.7	14.1	150.2	17.8	48.3	14322	14325



As a leader in advanced heating and filtration solutions with facilities across North America, CCI Thermal Technologies Inc. manufactures six of the top brands in industrial heating in addition to a comprehensive line of engineered industrial filtration products including:



Cata-Dyne™ is the industry standard in infrared gas catalytic heaters, enclosures, pipeline systems and accessories. Customers across a wide range of industries rely on Cata-Dyne™ to supply them with safe, reliable, efficient and versatile infrared catalytic heating equipment for a variety of applications in both hazardous and non-hazardous environments.

Ruffneck™ is renowned for its rugged, reliable and versatile heavy-duty explosion-proof heaters, heating systems and heating accessories. Ruffneck™ has a long and proud history of supplying quality heating products for the harshest industrial environments to a worldwide customer base for over 30 years. Ruffneck™ is well-known in the industry for its "ship the heat in a week" policy, where 95% of all standard orders are shipped within one week of order placement.



Caloritech™ electric heaters, heating elements and heating accessories are well-known in the industry for their quality, reliability, performance and versatility. In addition to standard "off the shelf" industrial heaters and heating systems components, Caloritech™ also offers engineered heating solutions custom designed, manufactured and tested to satisfy customer specifications. No matter what your application or environment, Caloritech™ has a solution to fit your heating needs.

3L Filters™ has satisfied the most demanding industrial filtration requirements for over 40 years. A broad range of standard and custom products includes liquid filters, strainers, separators, pressure vessels, and engineered products and systems. 3L Filters™ has special expertise for nuclear, petrochemical, water treatment and environmental applications.



Norseman™ is the most technologically advanced line of explosion-proof electric air heaters and heating accessories, including both forced air heaters and natural convection heaters, as well as unit heaters, panel heaters and thermostats. Norseman™ offers innovative, low maintenance solutions for a wide range of applications in a variety of industrial and commercial environments. Custom engineered heaters or heating systems are available for specialized applications.

Fastrax® has manufactured railroad track and switch heating since 1995. Fastrax® engineers complete heating packages for the rail industry. Fastrax® track and switch heaters are designed to provide the most efficient heat transfer on rail equipment and components for the coldest environments. In addition to heaters, Fastrax® manufactures fully automatic energy saving controls to complete the rail heating system.



DriQuik™ provides components for infrared drying ovens. DriQuik™ utilizes a pioneered radiant oven technology established in the 1930s providing the industry standard in infrared radiant heating components.

VISIT WWW.CCITHERMAL.COM FOR DETAILED PRODUCT INFORMATION.

Edmonton, AB
Head Office
1-800-661-8529
(780) 466-3178
F 780-468-5904

Oakville, ON
1-800-410-3131
(905) 829-4422
F 905-829-4430

Orillia, ON
1-877-325-3473
(705) 325-3473
F 705-325-2106

Houston, TX
1-855-219-2101
(281) 506-2310
F 281-506-2316

Denver, CO
1-855-244-3128
(303) 979-7339
F 303-979-7350