

Movable Point Frog Heating (Frog Wing Rail and Frog Point Plate) No. 20 and 24 Switches - SM and SMR Series (Retrofit)

Depending on location requirements, the SwitchBlade® heater is positioned within the slots of the wing rail braces to allow the heater to slide onto the top of the wing rail base. SwitchBlade® heaters may also be necessary in the four channels welded onto the bottom of the base plate just below the point area. If the frog is of a different design a retrofit may be required, contact factory for more information on Type SMR.

Table 5 – SwitchBlade® Movable Point Frog Heater Selection Guide

Rail Heater Type	Overall Length	Heated Length	Total Wattage	240V AC Model No.	480V AC Model No.
Frog Wing Rail Heater	12'	11'2"	3400	FSM32412	FSM34812
Frog Point Plate Heater	2'9"	2'1"	750	FSM42403	FSM44803

Note: Custom lengths and wattages available.



Figure 8 – Movable Point Frog Retrofit

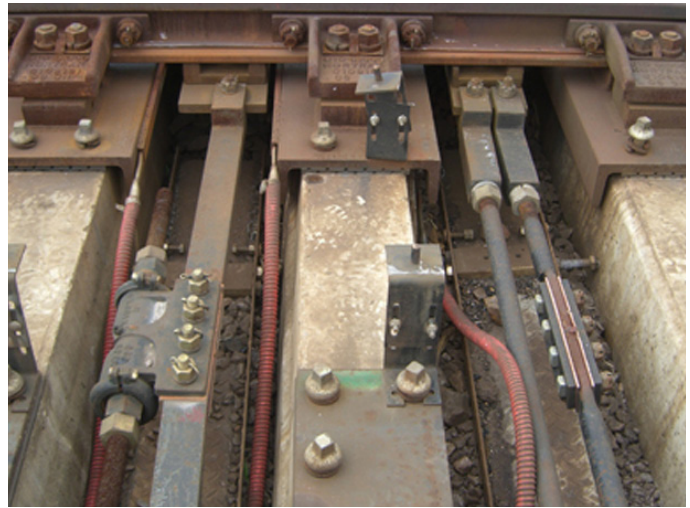
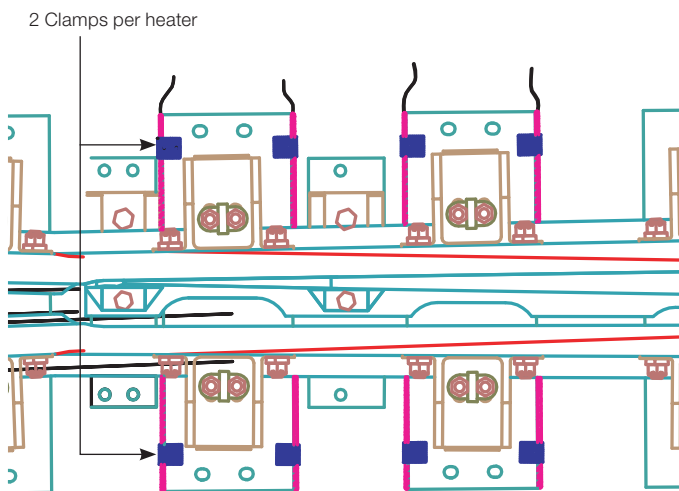


Figure 9



Note: To apply retrofit heaters to obsolete plate style movable point frog, contact Fastrax™.

Figure 10