



PRODUCT SPECIFICATIONS

SafeTrace[®] ISOLATED STEAM TRACING ThermoTube[®] PRE-INSULATED TUBING ACCESSORIES

TERMINATION AND SEAL KITS

Self-vulcanizing Seal Kit

is designed to make a waterproof seal over the end of SafeTrace or ThermoTube. No heat guns or special tools are needed for installation. Product is rated from -40°C to 204°C.

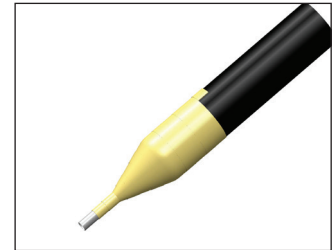
Kit components include:

- Self-vulcanizing silicone rubber tape
- RTV sealant

Each kit contains sufficient materials for approximately six (6) terminations.



FAK-7 End Seal Kit



Note . . . Electrical heat trace end-terminations and junction box assemblies (if included for TubeTrace SE/ME type heated tube bundles) must be purchased separately.

SPLICE KITS (Standard kits not intended for -HT and -HTX high temperature bundles*)

In-Line Splice Kit

is designed to make a weatherproof seal over SafeTrace or ThermoTube splices.

FAK-4

(fits 1-1/8" to 2-1/2" O.D. bundles)

FAK-4L

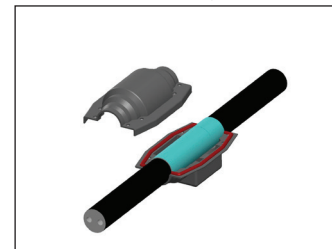
(fits 1-7/8" to 3-1/2" O.D. bundles)

Kit components include:

- UV resistant ABS shell
- Glass fiber insulation tape
- Aluminum heat barrier tape
- Stainless steel fasteners
- RTV sealant



FAK-4 In-line Splice Kit



Note . . . Heat trace splice kits and tube fittings must be purchased separately if required.

Tee Splice Kit

is designed to make a waterproof seal over SafeTrace or ThermoTube splices.

FAK-5

(fits 1-1/8" to 2-1/2" O.D. bundles)

FAK-5L

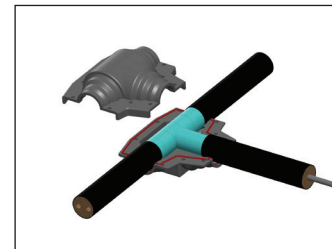
(fits 1-7/8" to 3-1/2" O.D. bundles)

Kit components include:

- UV resistant ABS shell
- Glass fiber insulation tape
- Aluminum heat barrier tape
- Stainless steel bolts and nuts
- RTV sealant



FAK-5 Tee Splice Kit



Note . . . Heater cable splice kits and tube fittings must be purchased separately.

90° Elbow Transition Kit

is designed to make a waterproof seal over SafeTrace or ThermoTube splices.

FAK-2

(fits 1-1/8" to 2-1/2" O.D. bundles)

FAK-2L

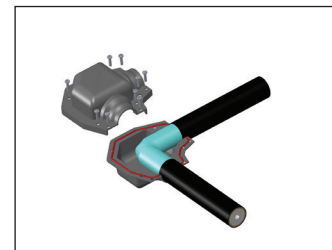
(fits 1-7/8" to 3-1/2" O.D. bundles)

Kit components include:

- UV resistant ABS shell
- Glass fiber insulation tape
- Aluminum heat barrier tape
- Stainless steel bolts and nuts
- RTV sealant



FAK-2 "Elbow" Splice Kit



Note . . . Tube fittings must be purchased separately.

* FAK-2L-HT

FAK-4L-HT

FAK-5L-HT

(for HT, HTX, and HTX-2 High Temperature Bundles)

THERMON The Heat Tracing Specialists[®]



European Headquarters: Boezemweg 25 • PO Box 205 • 2640 AE Pijnacker • The Netherlands • Phone: +31 (0) 15-36 15 37
Corporate Headquarters: 100 Thermon Dr • PO Box 609 San Marcos, TX 78667-0609 • Phone: 512-396-5801 • 1-800-820-4328
For the Thermon office nearest you visit us at . . . www.thermon.com

Form TSP0037U-1214 • © Thermon Manufacturing Co. • Printed in U.S.A. • Information subject to change.



PRODUCT SPECIFICATIONS

SafeTrace® ISOLATED STEAM TRACING ThermoTube® PRE-INSULATED TUBING ACCESSORIES

REPAIR/PATCH KITS

Repair/Patch Kit . . . is designed to make a waterproof seal over splices or outer cover repairs of SafeTrace or ThermoTube bundles.

FAK-8 (8" X 8" patch)

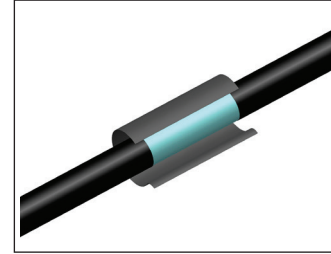
FAK-8L (8" X 96" patch)

Kit components include:

- Self-sealing rubber/fiber glass reinforced thermoplastic
- Glass fiber insulation
- Heat reflective tape
- Does not include tube fittings, if required



FAK-8



Note . . . Heat trace splice kits and tube fittings, if required, must be purchased separately.

ENCLOSURE/SHELTER ENTRY KITS

FAK-1 "Split Entry" Surface Mounted Entry Kit

is designed to provide an effective transition when SafeTrace or ThermoTube must pass through an enclosure or shelter wall.

FAK-1

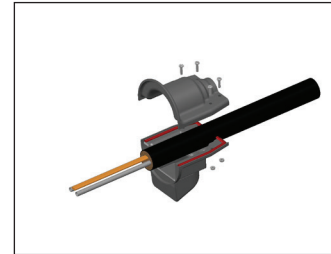
(fits 1-1/8" to 2-1/2" O.D. bundles)

Kit components include:

- UV resistant ABS shell
- Glass fiber insulation tape
- Aluminum foil tape
- Stainless steel bolts and nuts
- RTV sealant



FAK-1



FAK-9 Bulkhead Entry Heat Shrink Seal provides an effective transition and strain-relief when SafeTrace or ThermoTube passes through a wall 1" thick or less.

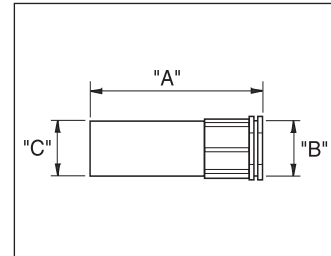
Kit components include:

- Heat-shrinkable bulkhead entry
- Factory applied sealant
- "O"-ring gasket

Catalog Number	"A" Overall Nom. Length mm	"B" Bundle Max. O.D. mm	"B" Drill Size mm	"C" I.D. After Shrinkage mm
FAK-9S	101.6	40.6	51.0	19.0
FAK-9	120.7	53.3	60.0	19.0
FAK-9L	177.8	73.4	89.0	36.3
FAK-9LX	292.1	95.0	115.0	38.1



FAK-9



FASTENING AND CLAMPING

FT-1H fixing tapes for attaching SafeTrace to piping every 30 cm or as required.

Catalog Number	Temperature Maximum	Min. Install Temperature	Dimensions
FT-1H	500°F	-40°F	1/2" x 108'



FT-1H

LCF Clamps are designed to provide support for ThermoTube installations.

LCF 1-1/4"

(for up to 1-3/8" O.D. bundles)

LCF 1-5/8"

(for up to 1-3/4" O.D. bundles)



LCF