

Terminator™ ZL

Lighted Power Connection/
End Termination Kit

INSTALLATION PROCEDURES

For Power Connection or End Termination Applications



Terminator™ ZL

INSTALLATION PROCEDURES

Kit Contents



Item	Quantity	Description
1	1	Expediter Assembly Support Cap with O-Ring Threaded Grommet Compressor Grommet Support Base with O-Ring
2	1	Junction Box Lid
3	1	Junction Box Base with O-Ring
4	1	Nut
5	1	Banding
6	1	Banding Guide
7	1	Terminal Blocks with DIN Rail (Refer to terminal specifications for maximum allowable wire size)
8	1	Junction Box Cord

Order Separately

PETK Power and End Termination Kits (per cable)

PETK-1 for BSX, RSX, VSX-HT

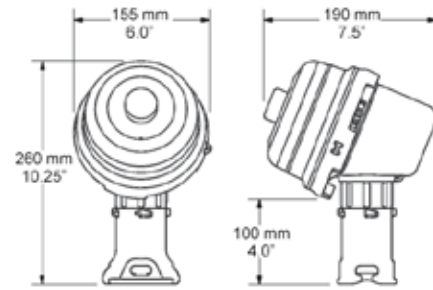
PETK-2 for KSX, HTSX, USX

PETK-3 for HPT, FP



Item	Quantity	Description
1	1	RTV Tube
2	1	Power Connection Boot
3	1	End Cap
4	1	Tape Strip 6" (PETK-3 only)
5	1	End Termination Caution Label
6	1	GRW-G Grommet (PETK-3 only)
7	1	Ground Sleeve

Dimensions



Installation Precautions

- To minimize the potential for arcing and fire caused by product damage or improper installation use ground-fault protection. The National Electrical Code (NEC) and Canadian Electrical Code (CEC) require ground-fault protection of equipment for each branch circuit supplying electric heat tracing.
- Installation must comply with Thermon requirements and be installed in accordance with the NEC, CEC, or any other applicable national and local codes.
- Component approvals and performance ratings are based on the use of Thermon specified parts only. User supplied power connection fittings must be listed or certified for intended use.
- De-energize all power sources before opening enclosure.
- Avoid electrostatic charge. Clean only with a damp cloth.
- Keep ends of heating cable and kit components dry before and during installation.
- Individuals installing these products are responsible for complying with all applicable safety and health guidelines. Proper personal protective equipment, or PPE, should be utilized during installation. Contact Thermon if you have any additional questions.

Tools Required



Certifications/Approvals



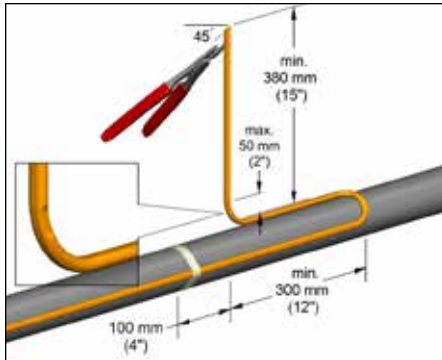
IP66/Type 4X -60°C ≤ Ta ≤ +55°C
Ordinary & Hazardous Locations
Class I, Division 2, Groups A, B, C, & D



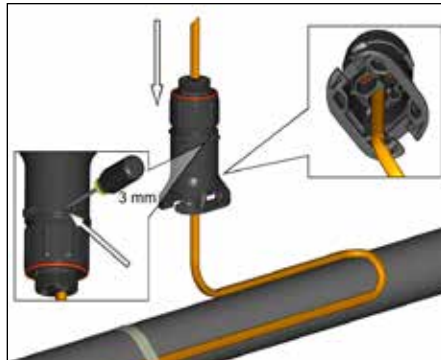
Class II, Division 2, Groups F & G, Class III
Class I, Zone 1, AEx eb IIC T6...T4



09.2238691,-G,-S, Ex eb IIC T6...T4

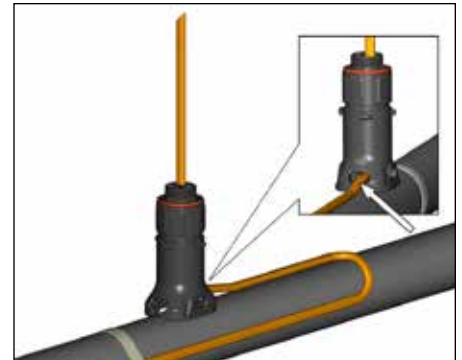


1. Locate bus connection (HPT and FP only) and cable as shown. Cut end of cable at angle to aid in piercing grommet. Leave additional cable for expansion loop. See page 4 for multiple cable installation tips.



2. Insert cable into expediter. If mounted on bottom or side of pipe, punch out weep hole.

Note: For HPT and FP cable, exchange grommet in Terminator with GRW-G provided in PETK-3.



3. Slide expediter toward pipe and route cable through support base entry.



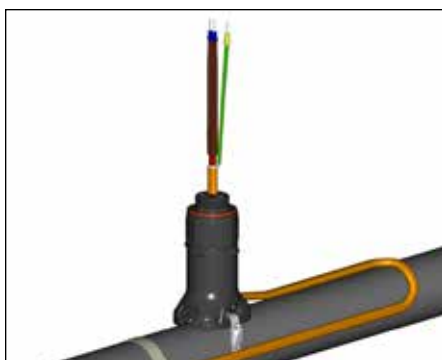
4. Insert banding guide into expediter and snap into place.



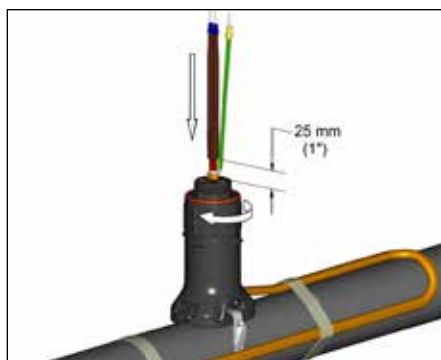
5. Mount expediter to pipe using pipe band. Do not band over cable.



6. Cut off end of cable.



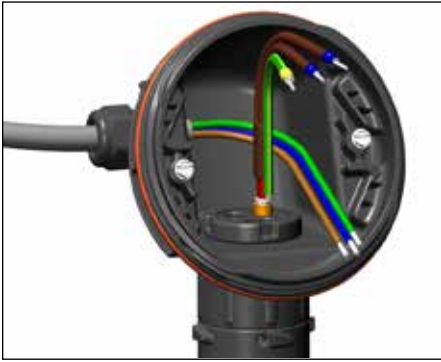
7. Terminate cable with appropriate PETK termination kit. Refer to PETK installation instructions.



8. Push excess cable back through expediter. Tighten cap securely. Tape cable expansion loop to pipe.



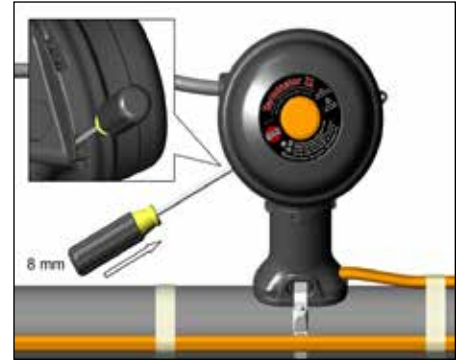
9. Mount junction box base on expediter. Make sure to align slots to properly orient junction box base. If mounting horizontally, threaded gland holes must face downward.



10. Install power cable (if necessary).

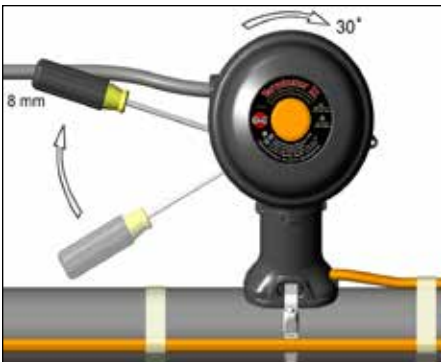


11. Install quick mount terminal blocks and tighten screws (if necessary). Complete system wiring. Tightening torque 1.5 Nm–1.8 Nm (1.1 ft-lb–1.3 ft-lb).

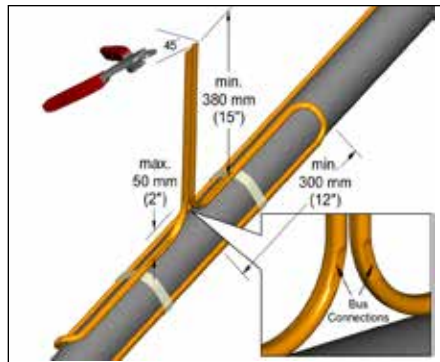


12. Install junction box lid and twist hand tight. Insert screwdriver into ratchet slots located on side of junction box base.

Two Cable Layout Tips



13. Use screwdriver to ratchet on junction box lid. Lid will rotate 30 degrees. Lid latch mechanism fully engaged. To remove lid, repeat steps 12 and 13 but in the opposite direction.



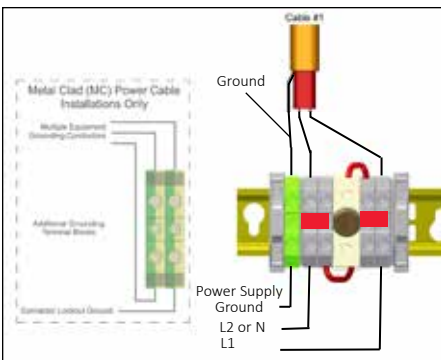
Locate bus connection (HPT and FP only) and cable as shown. Cut end of cable at angle to aid in piercing grommet. Leave additional cable for expansion loop.



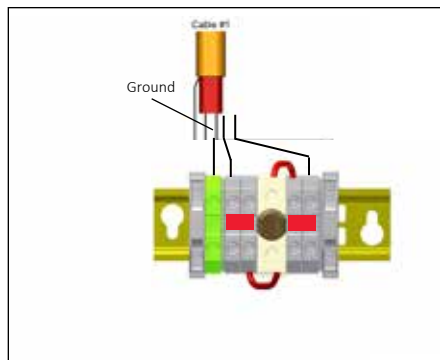
Insert two cables into expediter.

Note: For HPT and FP cable, exchange grommet in Terminator with GRW-G provided in PETK-3.

Wiring Details



Power Connection (1 to 2 Heating Cables)



End Termination (1 Heating Cable Only)

