



GENESIS CONTROLLER

CONTROL AND MONITORING SYSTEM

QUICK START GUIDE

The Genesis Controller HMI serves as the central user interface.

- ▶ View Status For 72 Circuits On Dashboard
- ▶ Allows Up To 20 RTD's Per Circuit
- ▶ Communications to Host Computer via Ethernet Communications
- ▶ Reduced Wiring And Connections
- ▶ Each RTD is Addressable
- ▶ Control Panel - IP66 IP Rating

The Genesis Controller has a simple "glove touch" interface that allows the operator to adjust and monitor heat tracing circuits. The following steps show navigation of the controller's basic functions.

OVERVIEW

The Overview screen displays information on any circuit.

"HAMBURGER" MENU

To edit circuit values, log in by touching the "Hamburger" menu.

Select **Admin Login**.

OVERVIEW

Rotate the teardrop cursor or use the arrows to select a circuit.

Touch inside the circuit dial to show the Circuit Dashboard.

CIRCUIT DASHBOARD

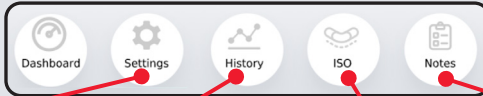
Touch any value on circuit details to edit a setpoint.

NUMBER PAD

Edit Maintain Temp, Alarms, and Control Band using the number pad.

Select check to accept new setpoint.

Select an icon at the bottom of any Circuit Screen:

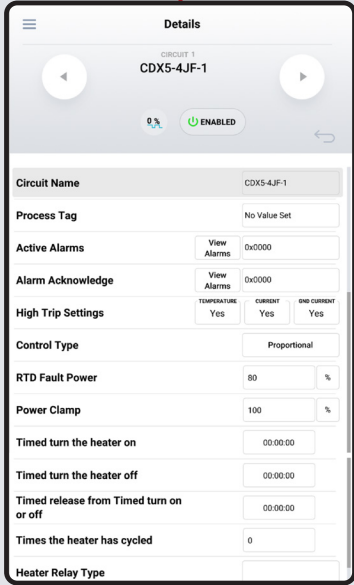


Select **Settings** to adjust variables specific to a circuit.

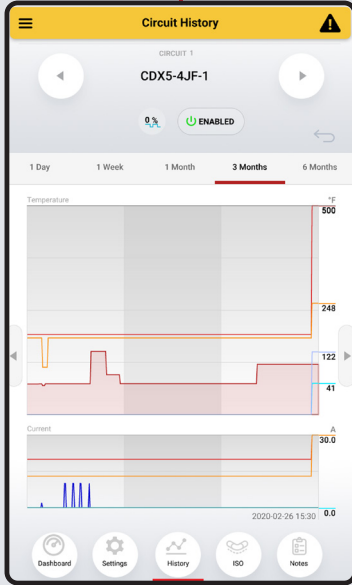
Select **History** to view up to 6 months of data for the circuit.

Select **ISO** to view the isometric drawing for the circuit.

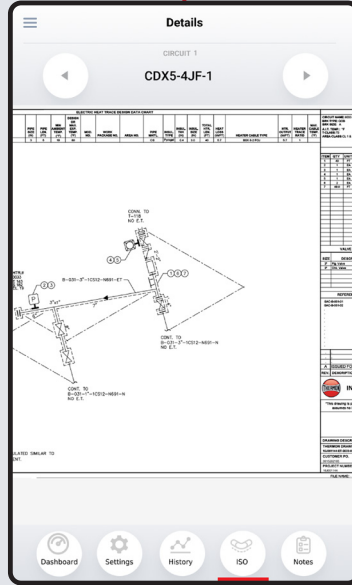
Select **Notes** to add comments to a circuit.



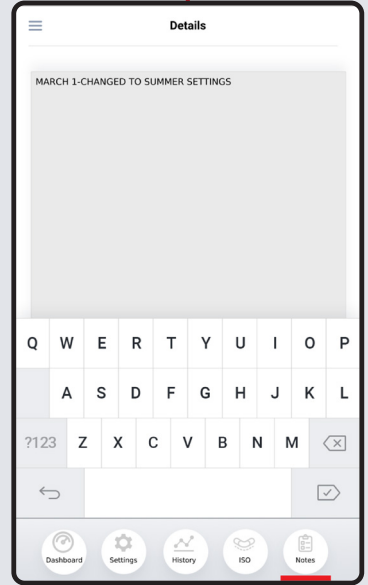
SETTINGS



HISTORY

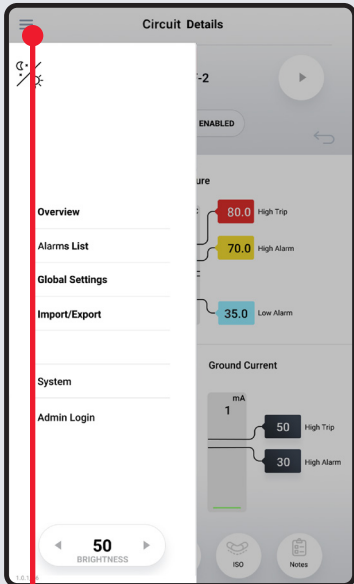


CIRCUIT ISO

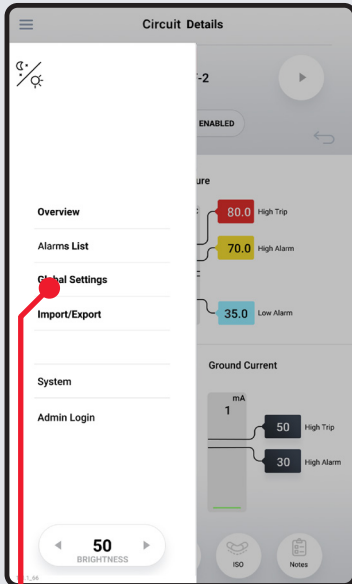


NOTES

"HAMBURGER" MENU

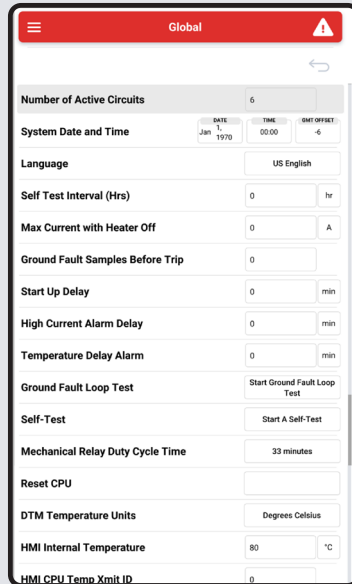


Select the "Hamburger" menu to make global adjustments.

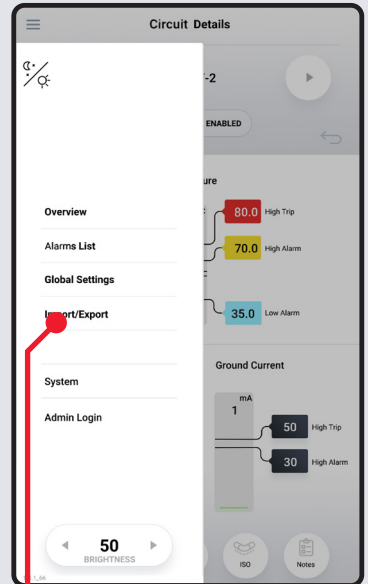


Select **Global Settings** to adjust how the Genesis displays system-wide variables such as language, temperature, system time.

GLOBAL SETTINGS



Select any value in Global Settings to make adjustments to circuit level or updates to Global Settings.



Select **Import/Export** to import or export ISO drawings and circuit-level details.



Corporate Headquarters: 7171 Southwest Parkway · Building 300, Suite 200 · Austin, TX 78735 · Phone: 512-690-0600
For the Thermon office nearest you visit us at . . . www.thermon.com

Form TEP0217-0820 © Thermon, Inc. · Printed in U.S.A. · Information subject to change.